

SITESCAPE®



NVR Device Assignment **Setup Guide**

SITESCAPE V4.3

Version 1.0.2



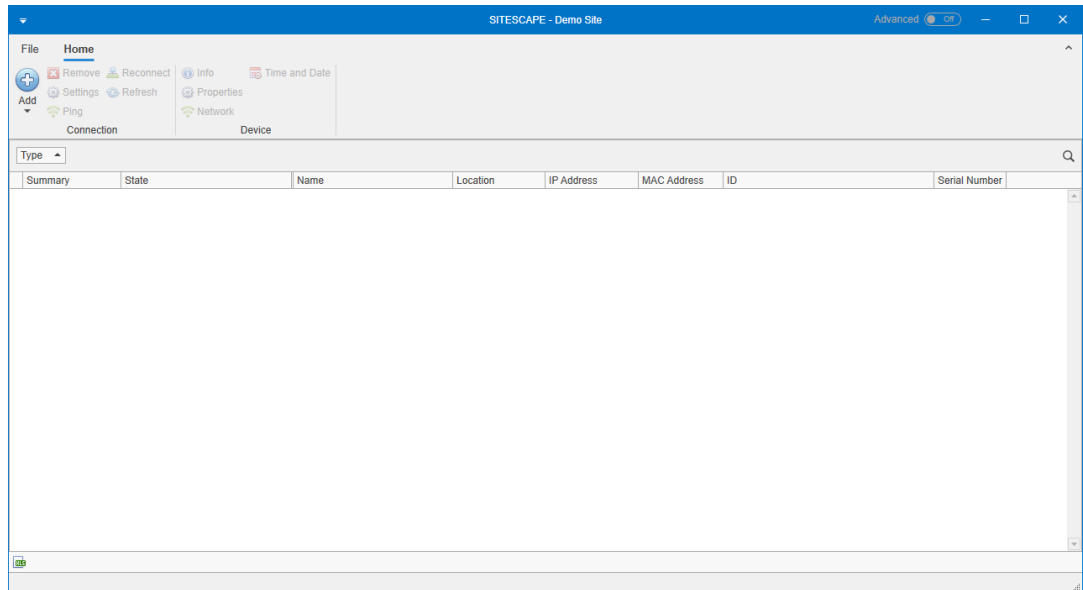
Contents

| | | |
|---|------------------------------------|----|
| 1 | Introduction | 3 |
| 2 | Add Devices to a Site | 4 |
| 3 | Add a Device manually | 13 |
| 4 | Assign a Device to a COLDSTORE NVR | 16 |
| 5 | Enable a Recording Job | 20 |
| 6 | Verify that a Channel is recording | 24 |

1 Introduction

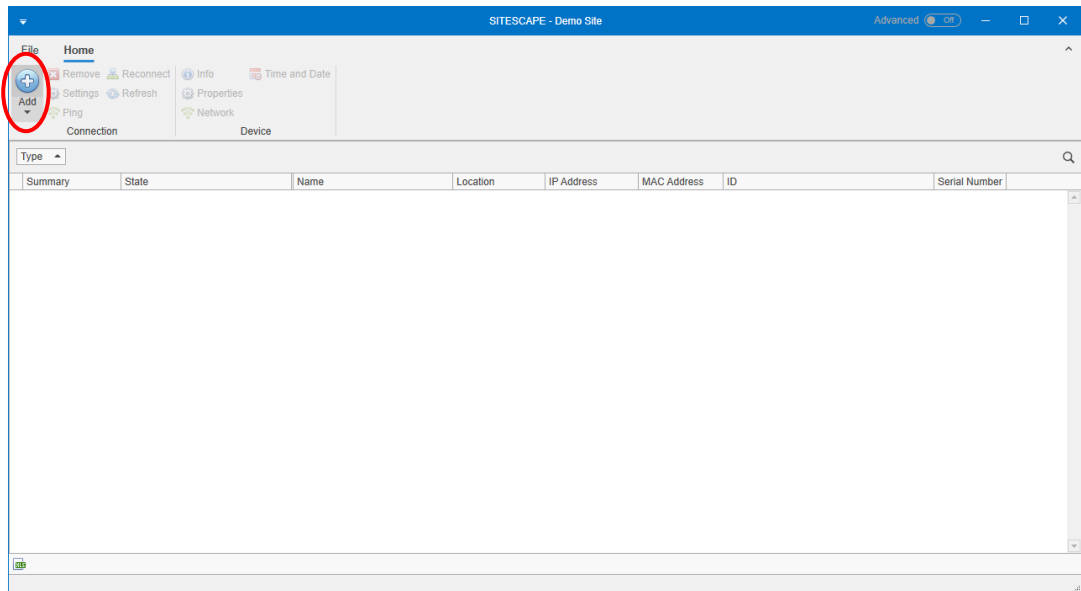
This document outlines the process for adding Devices to a Site, assigning Devices to a COLDSTORE NVR, and enabling Recording Jobs.

This guide expects the user to be familiar with creating and opening a Site and to have a Site open in SITESCAPE®.

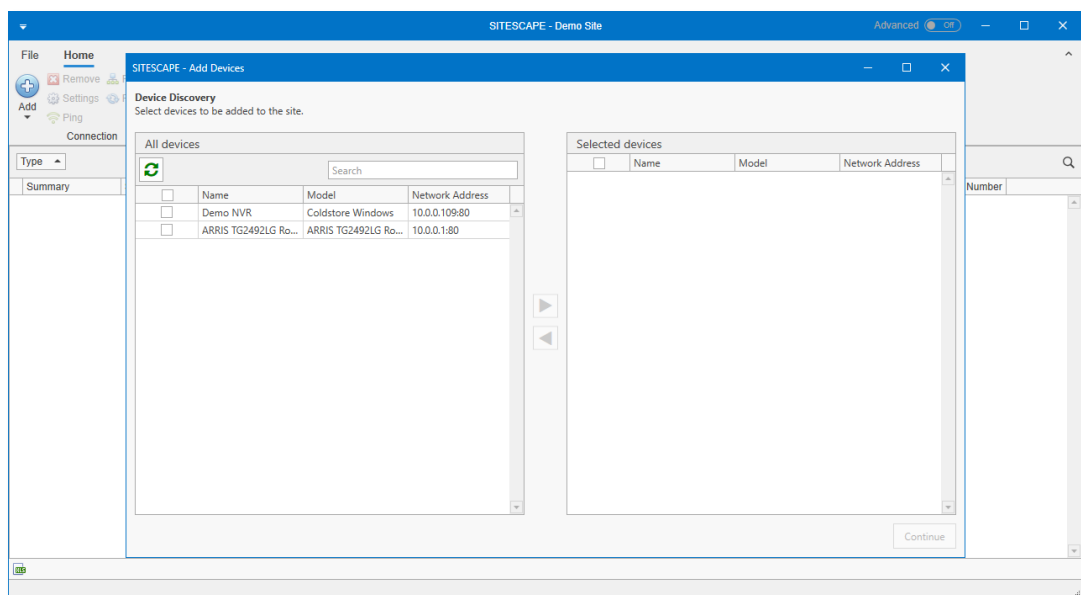


2 Add Devices to a Site

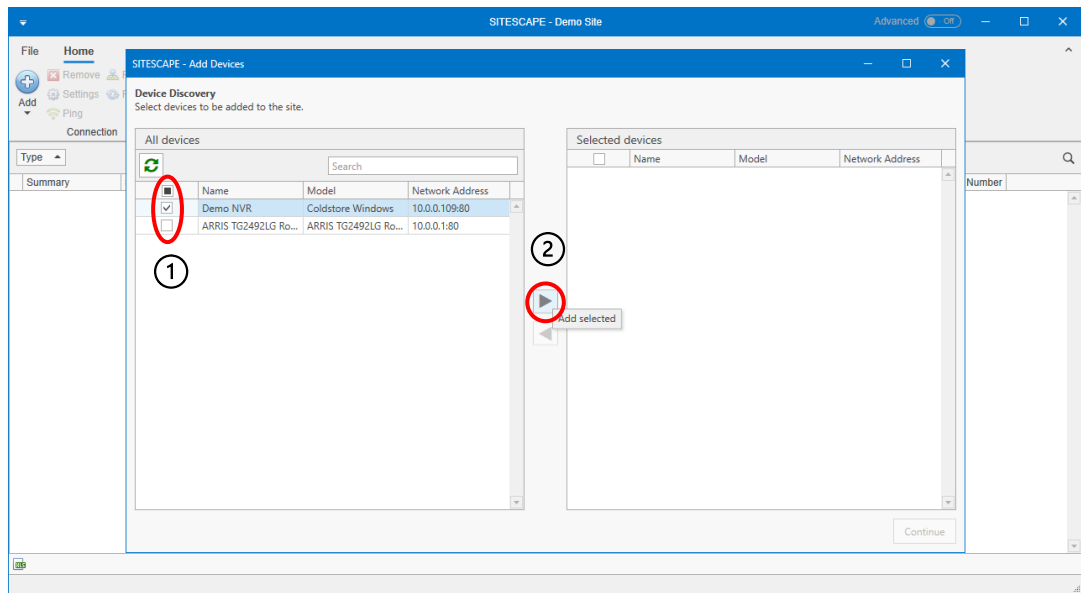
To add Devices to the Site, click the Add button in the top left of the window, in the Connection section of the ribbon menu bar.



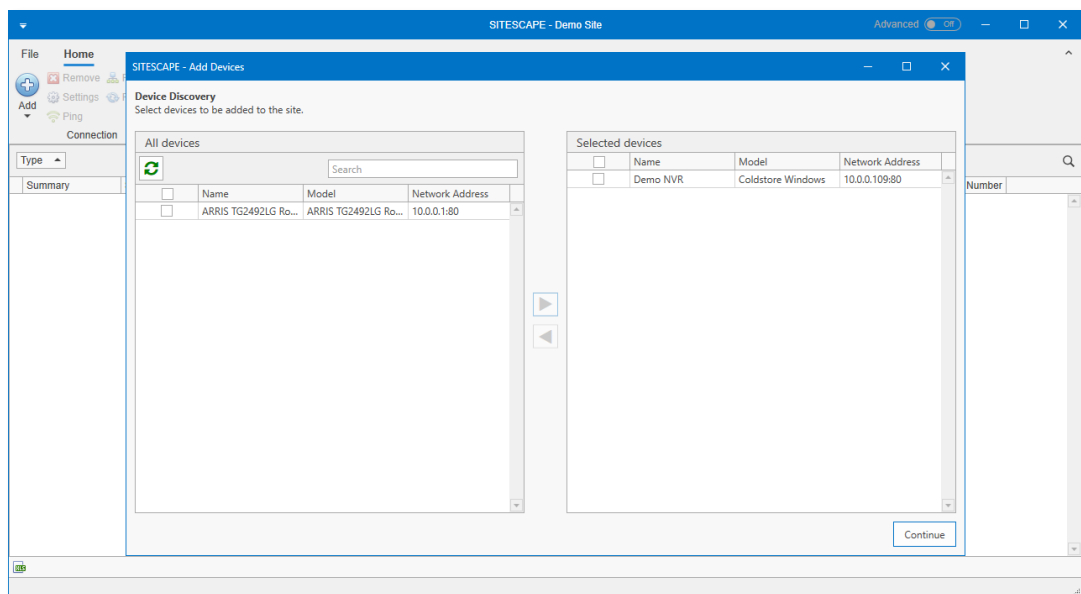
The Device Discovery page will pop up. It contains two panes: the left pane shows Devices discovered on the local network and the right pane shows Devices which have been selected to be added to the Site.



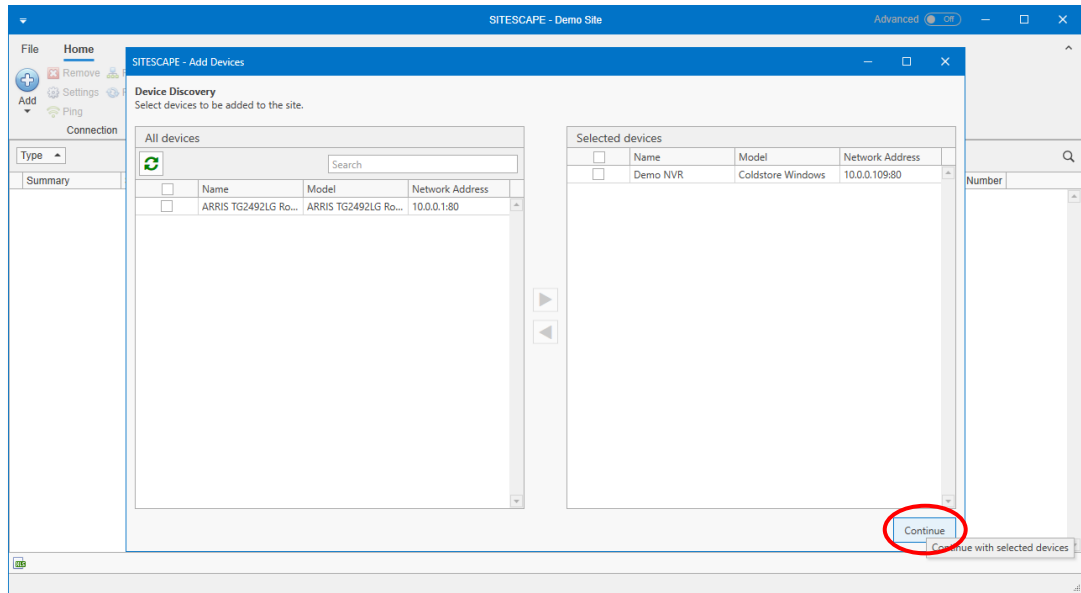
To select a Device to add to the Site, click on the empty checkbox next to the chosen Device in the left pane. If the Device you want to add does not appear in the left pane, follow the instructions in Section 3 below to add it manually. After checking the checkbox for one or more Devices, click the button between the panes with the arrow pointing to the right.



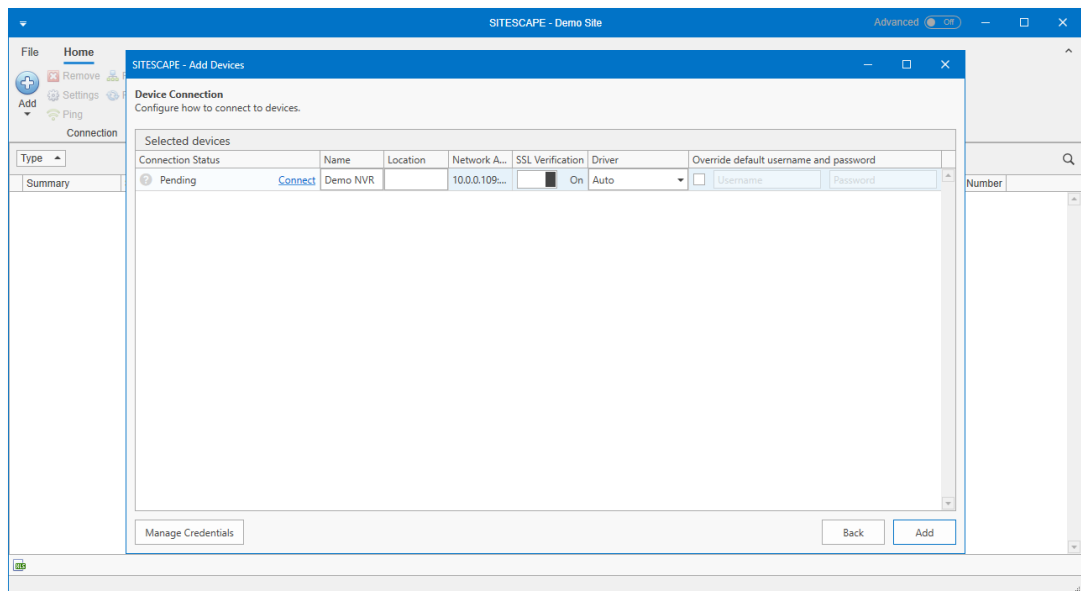
The checked Devices will be moved to the right pane.



Once you have selected the Devices to add to the Site, click the Continue button in the bottom right of the window to proceed to the next page.



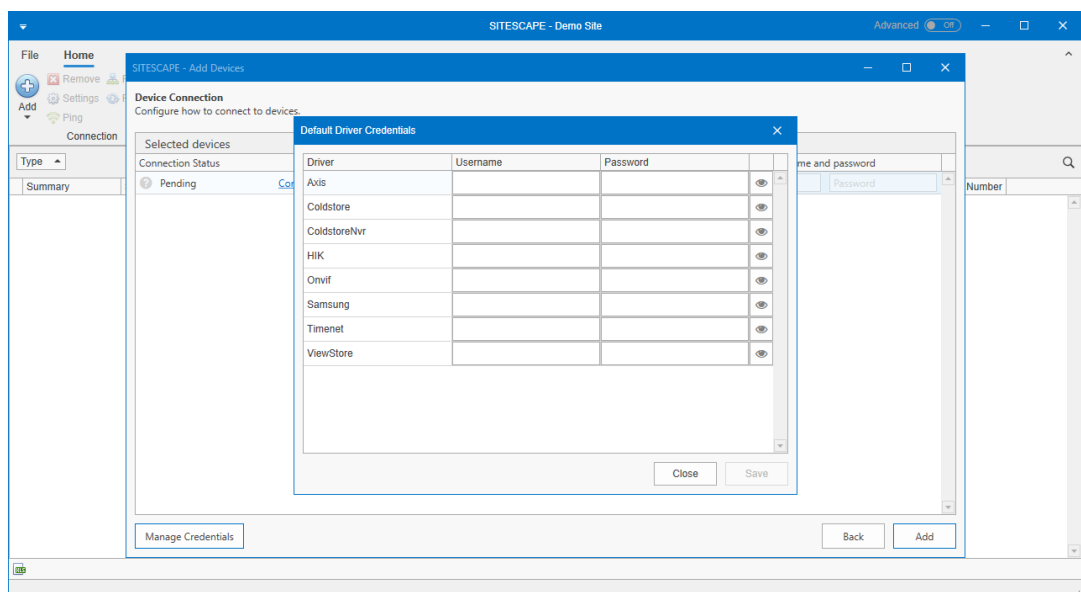
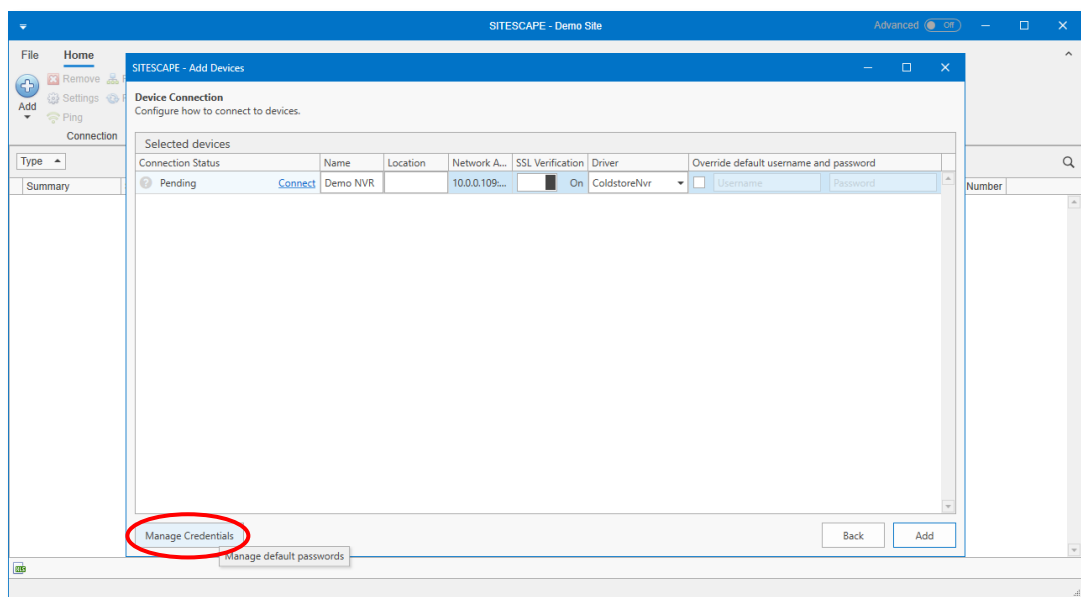
The Device Connection page will be shown. The Devices selected on the previous page will be shown with options to configure how to connect to these Devices.



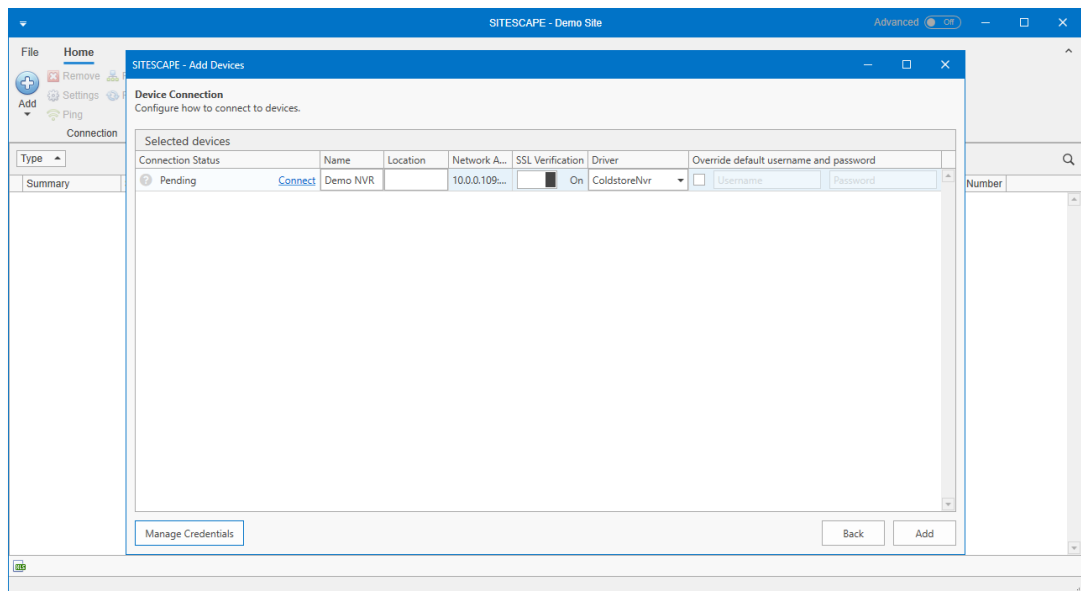
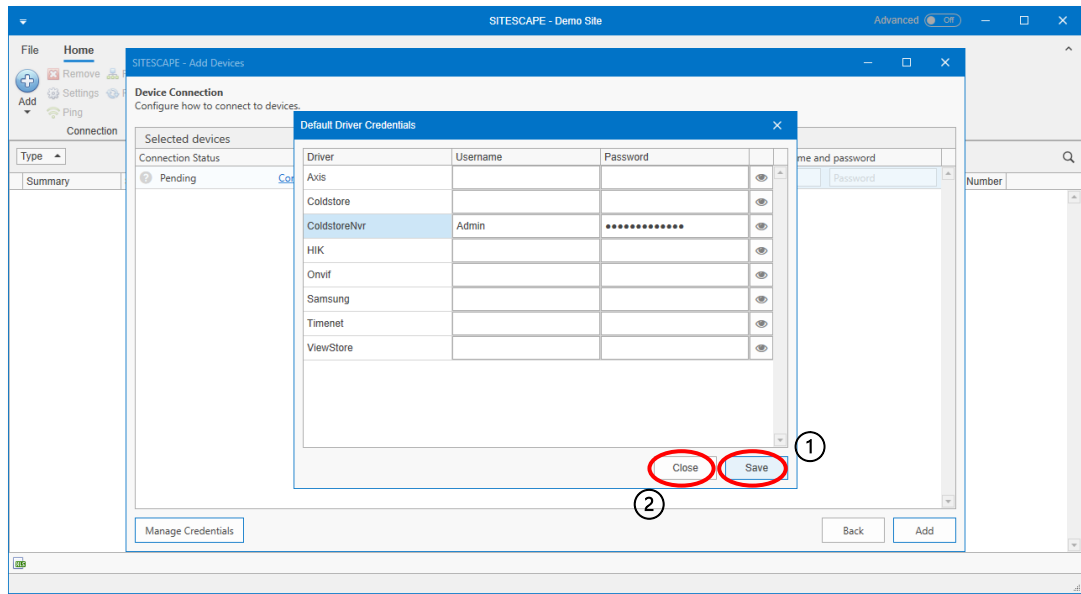
Set the appropriate options for your Devices. The available connection options are:

- SSL Verification: whether to verify certificates, only applies to Devices with SSL support
- Driver: the type of Device, determines how SITESCAPE will communicate with the Device
- Override default username and password: use a custom username and password for the Device

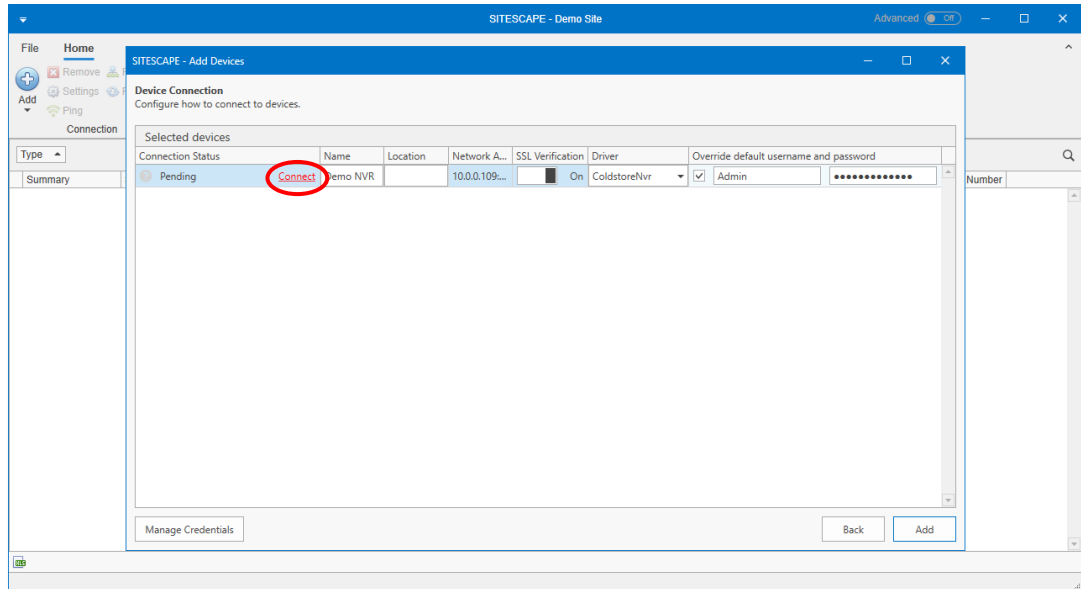
Instead of specifying the username and password for each Device, you can choose to set a username and password to use for all Devices of a particular type. To do so, click the Manage Credentials button in the bottom left of the window to show the Default Driver Credentials window.



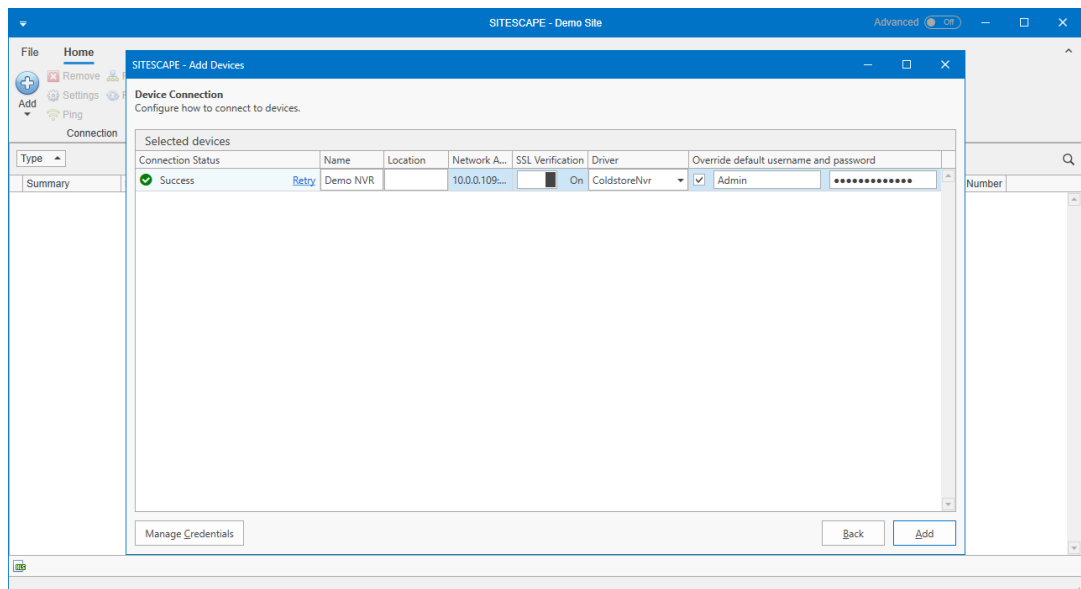
Enter the username and password for your type of Device and click the Save button in the bottom right of the window to save the credentials and then click the Close button to close the window and return to the Device Connection page.



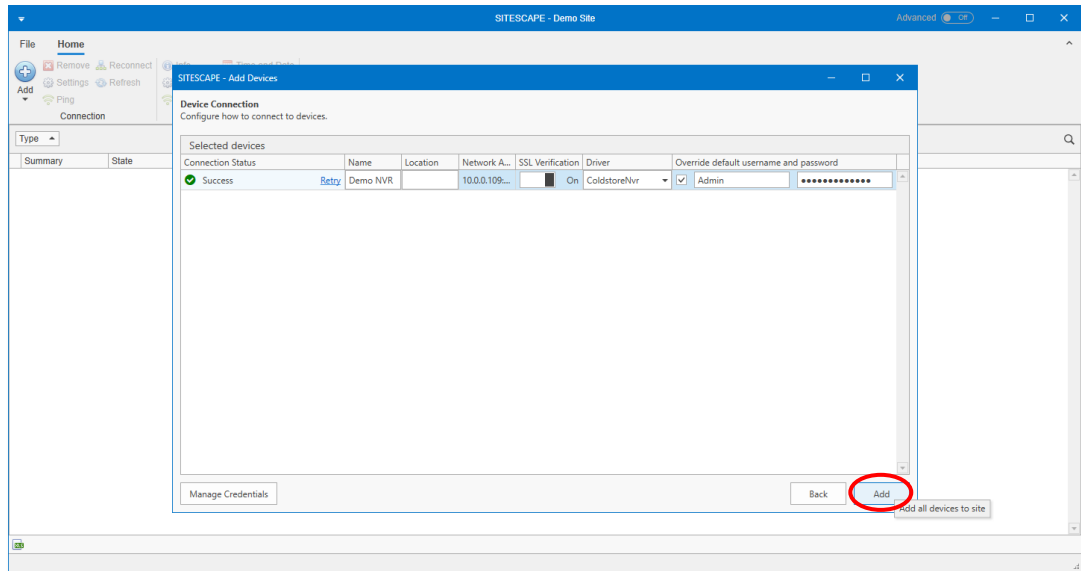
You can optionally test the connection by clicking the Connect link in the Connection Status column.



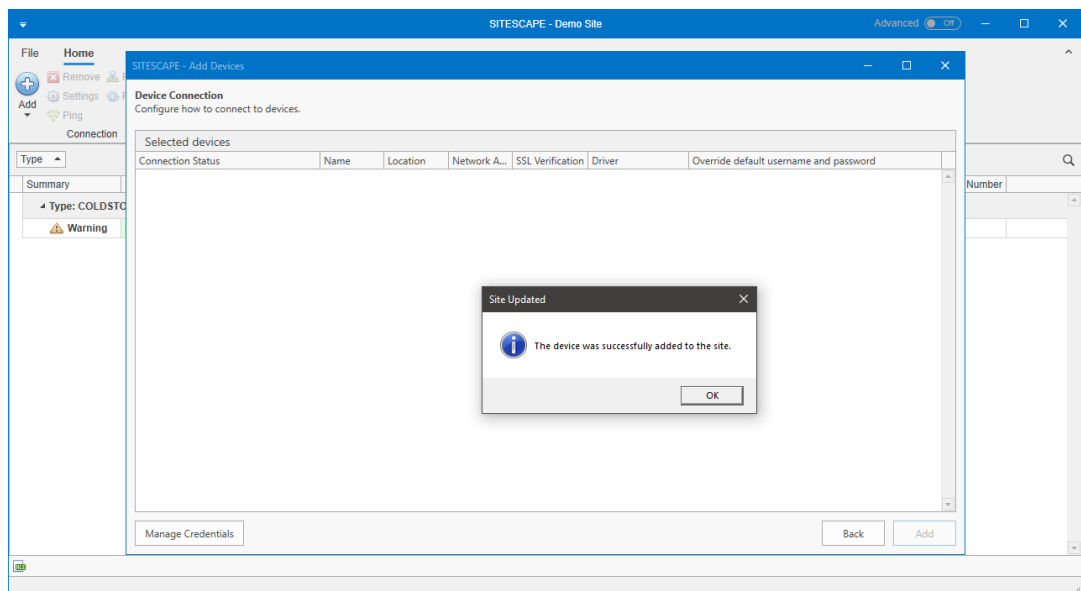
The connection status will show 'Success' if the connection succeeded and will show an error message if not.



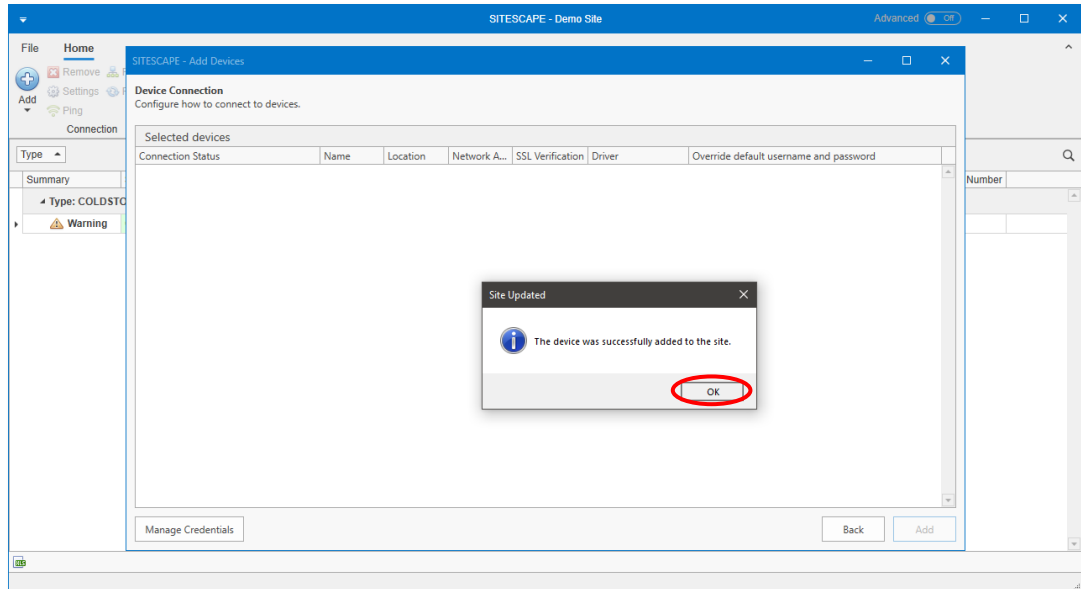
Once you are sure that your connection options are correct, click the Add button in the bottom right corner of the window to add the Devices to the Site.



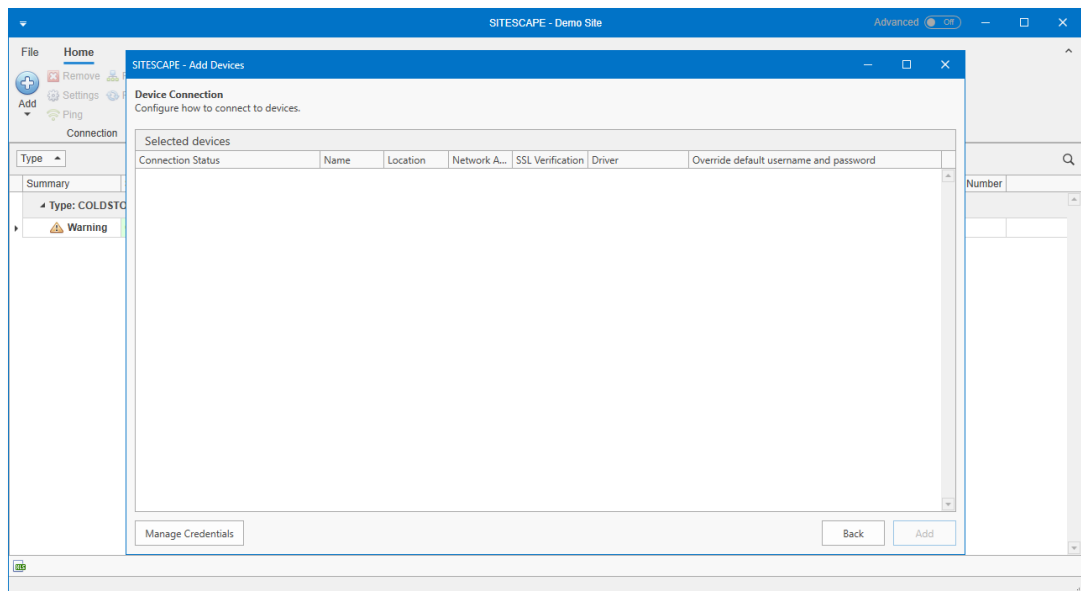
If the connection options are correct, the Devices will disappear from the Device Connection page and a message box will pop up to notify you that the Devices were successfully added to the Site.



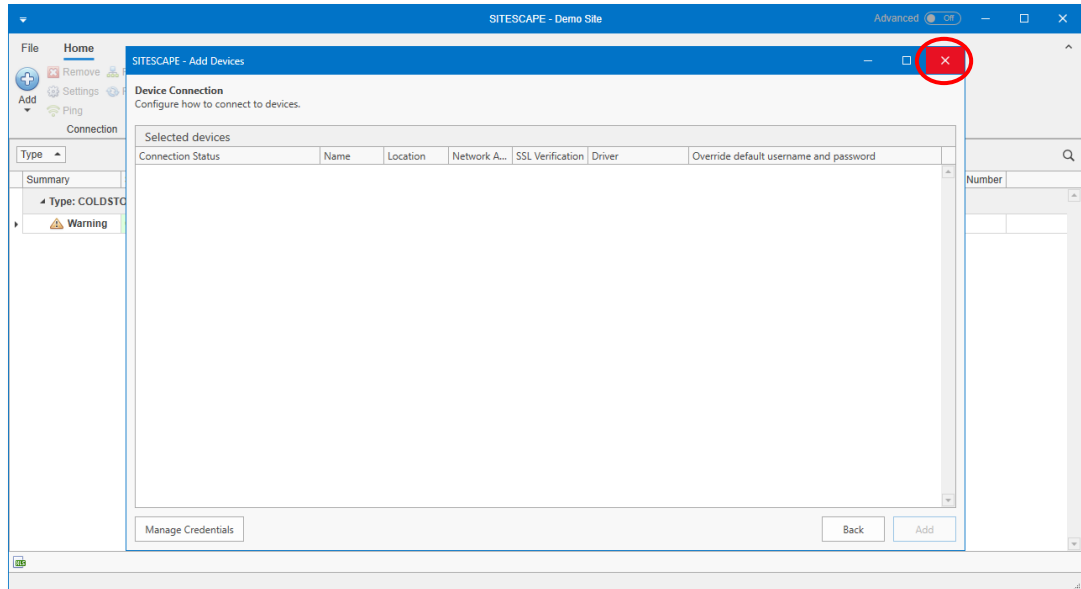
Click the OK button to close the message box.



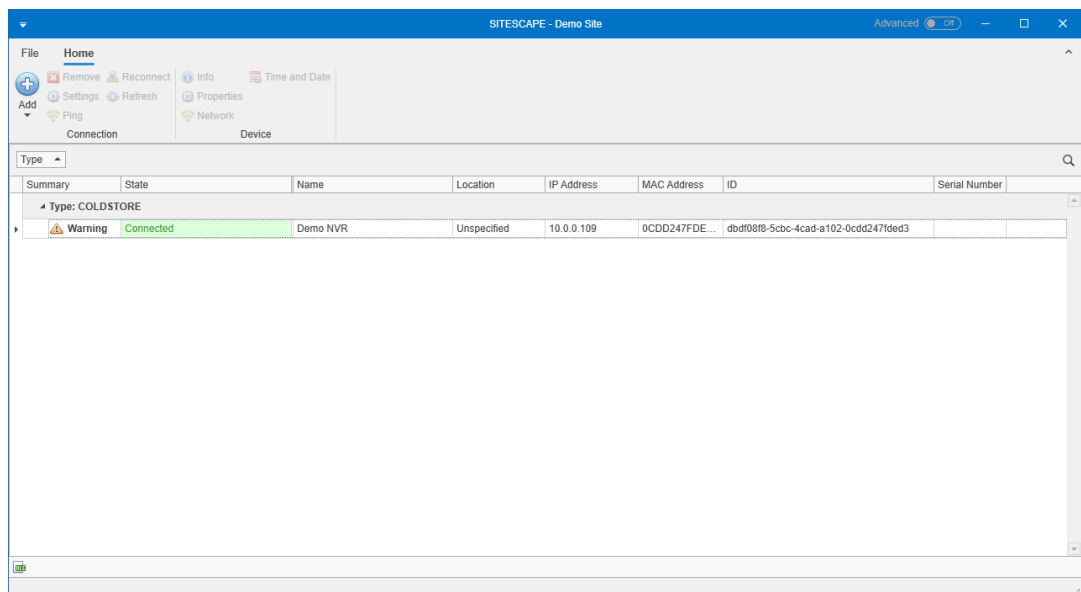
The message box will disappear. If all Devices were added to the Site successfully, the Device Connection list will now be empty.



If you are finished adding Devices, click the close button in the top right corner of the Add Devices window.

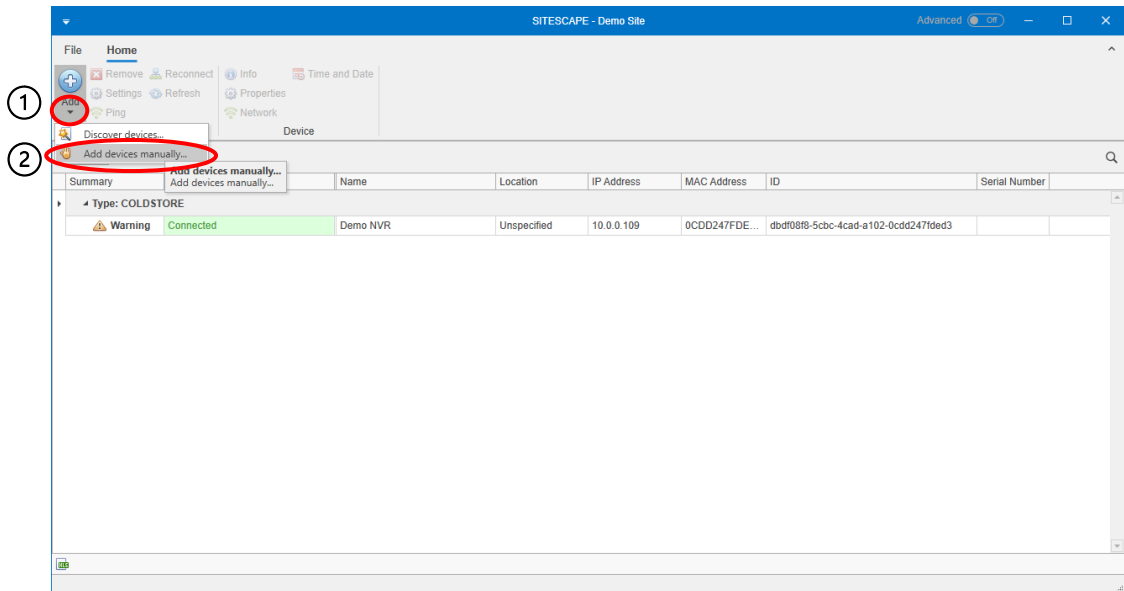


The Add Devices window will close. You will be able to see the Devices in the main SITESCAPE window.

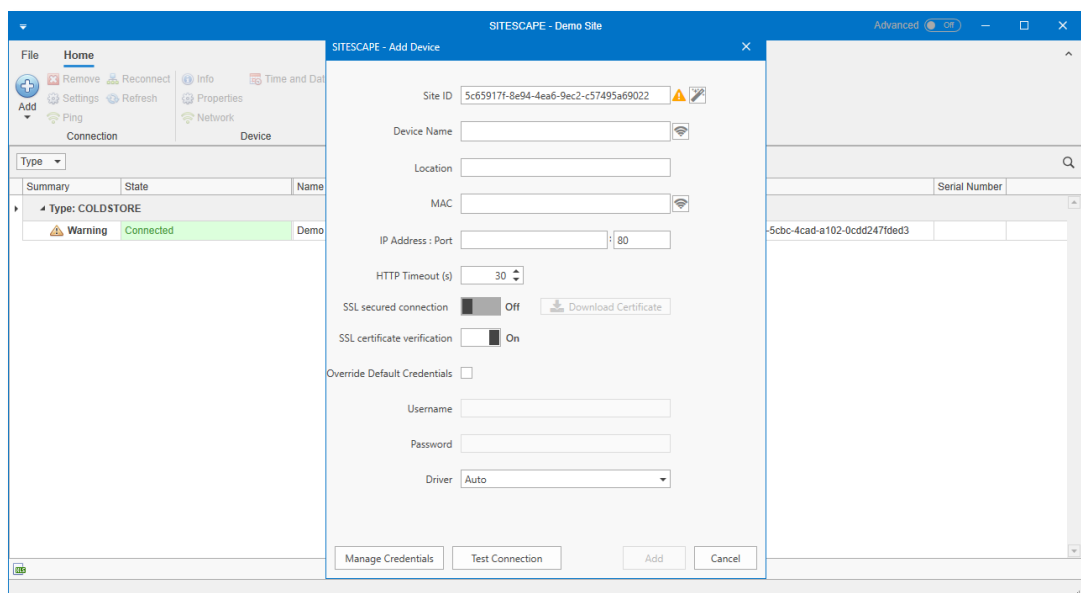


3 Add a Device manually

If your Device does not appear in the Device Discovery page, you can add it to the Site manually. Click the arrow below the Add button to open the drop-down menu and select the 'Add devices manually' entry.



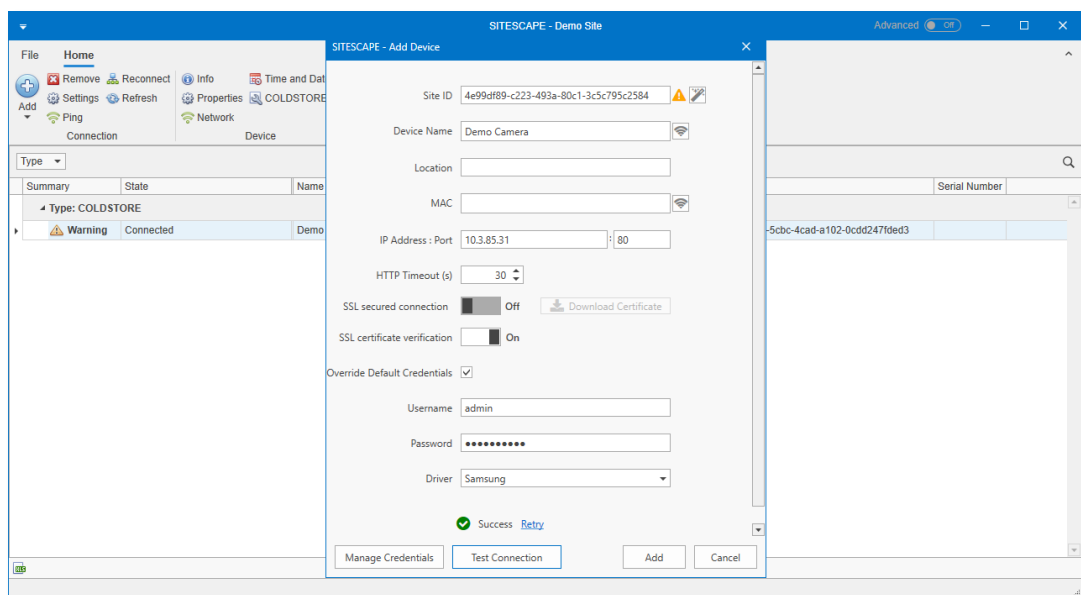
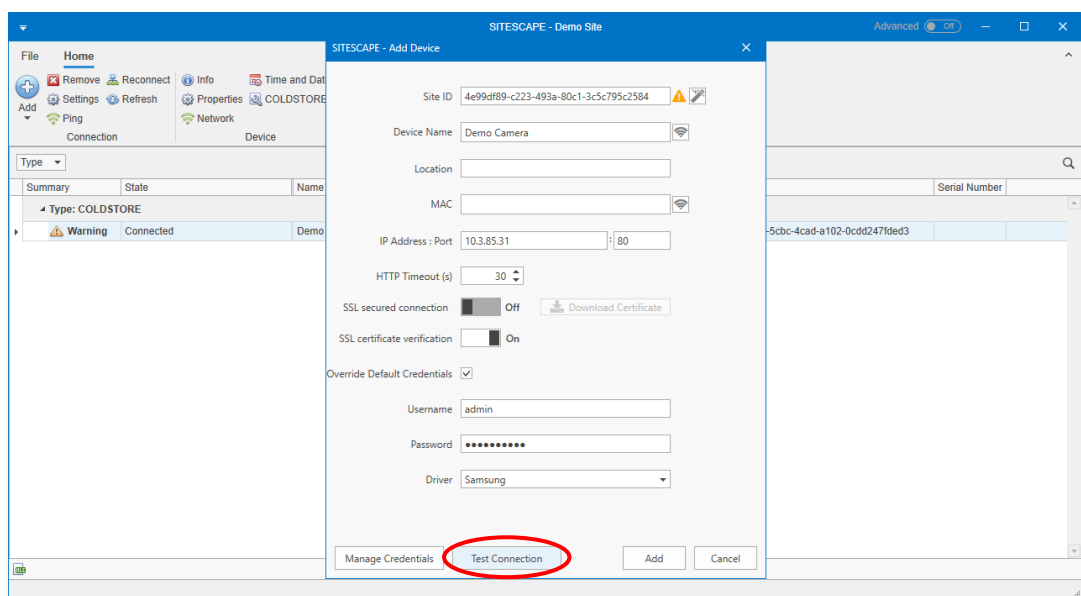
The Add Device window will pop up. This window allows you to manually enter all the information needed to connect to a Device.



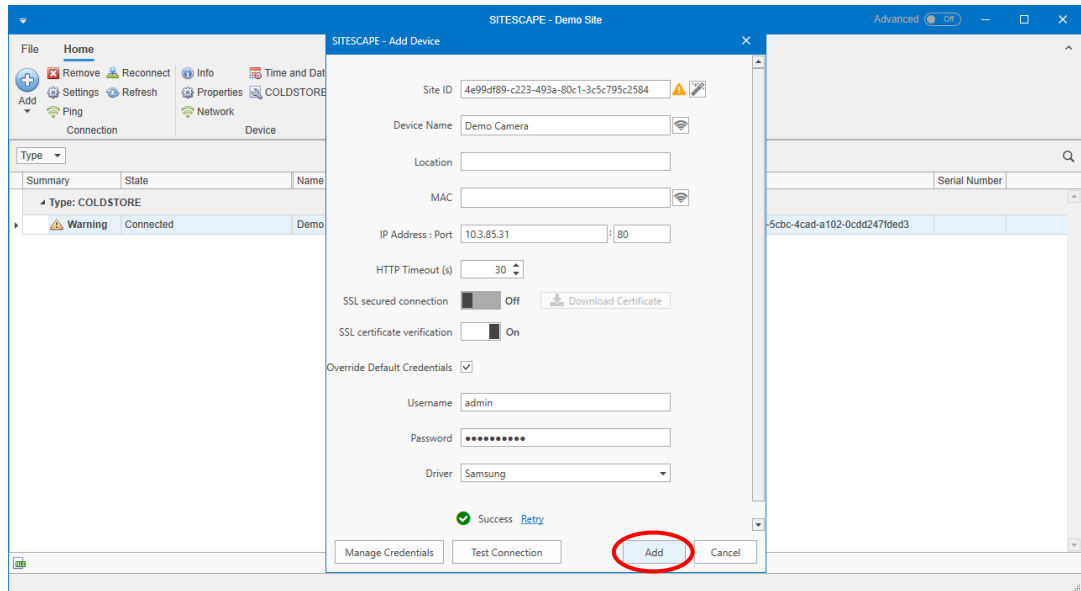
Enter the information required to connect to your Device. The following fields are required:

- Site ID: a unique identifier for the Device, you can set your own or use the generated one
- Device Name: the name that will appear in SITESCAPE
- IP Address & Port: the IP address and port of the Device
- SSL secured connection: whether the connection should use SSL
- SSL certificate verification: whether to verify certificates, only applies to Devices with SSL support
- Override Default Credentials: use a custom username and password for the Device
- Driver: the type of Device, determines how SITESCAPE will communicate with the Device

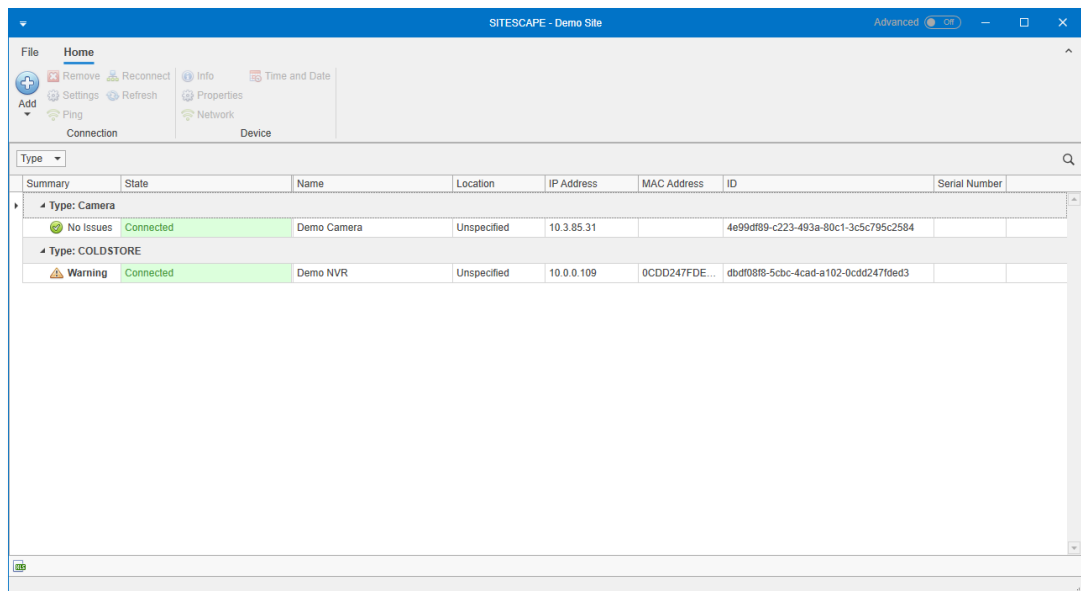
You can optionally test the connection by clicking the Test Connection button at the bottom of the window.



Once you are sure that your connection options are correct, click the Add button in the bottom right corner of the window to add the Device to the Site.

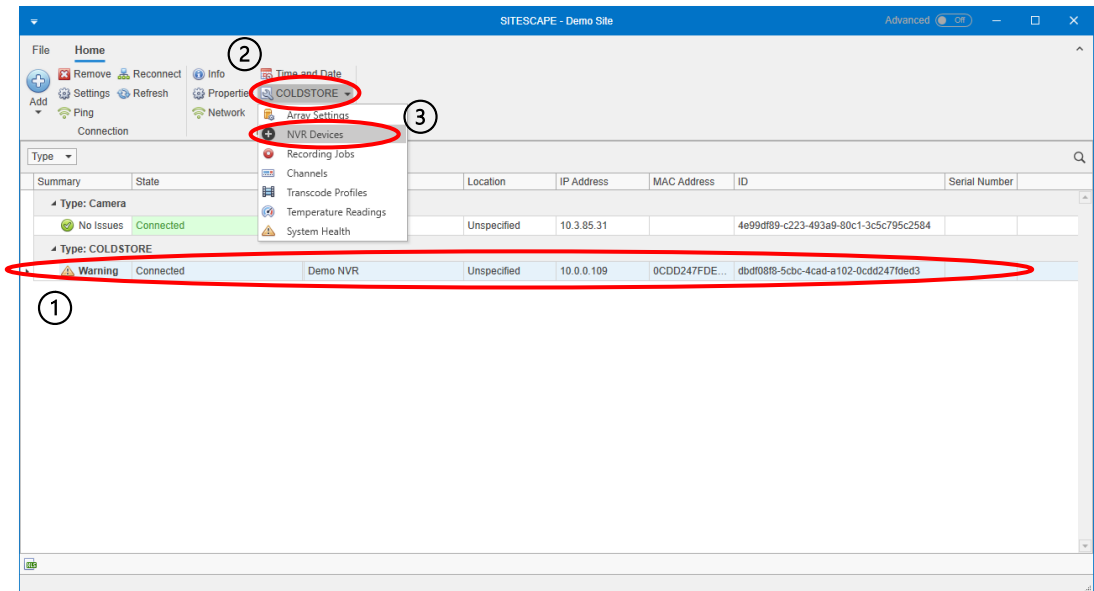


The Add Devices window will close. You will be able to see the Device in the main SITESCANE window.

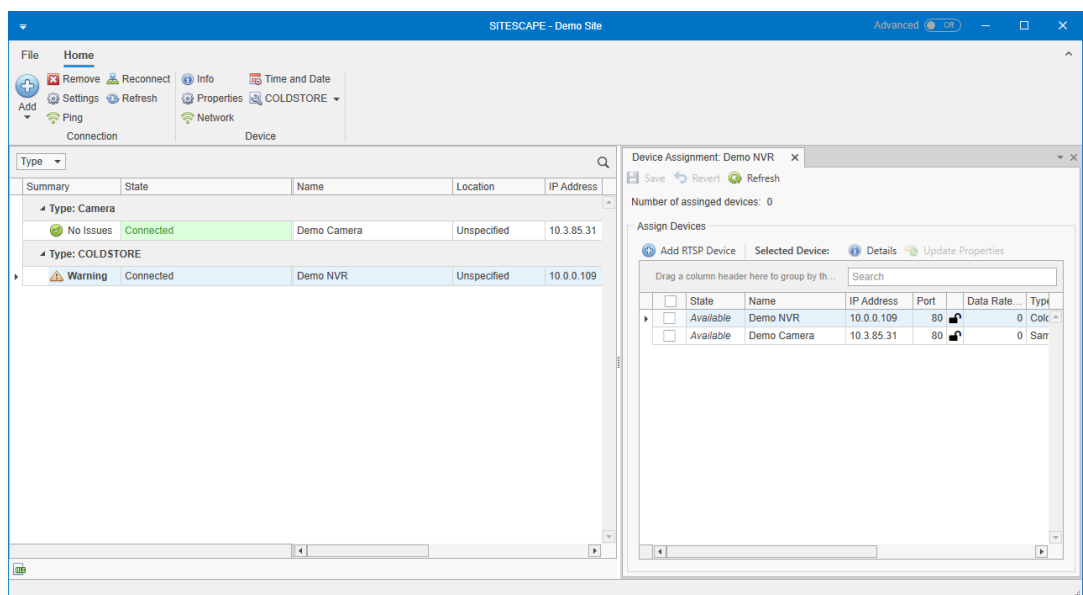


4 Assign a Device to a COLDSTORE™ NVR

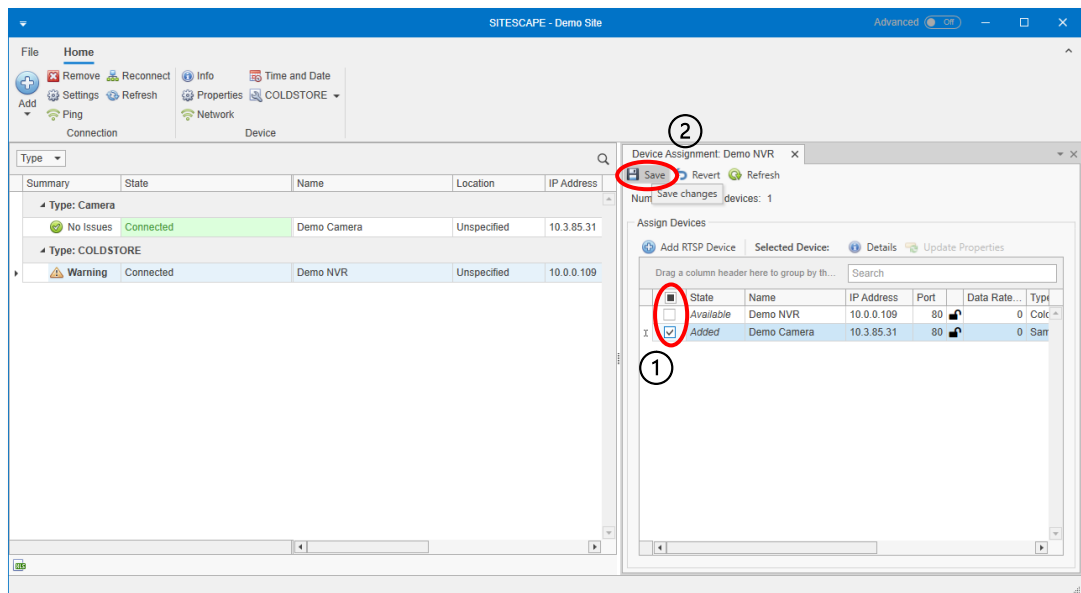
To assign Devices to a COLDSTORE NVR, select the COLDSTORE™ in the Device list and click on the COLDSTORE button in the Device section of the menu bar. From the drop-down, choose NVR Devices.



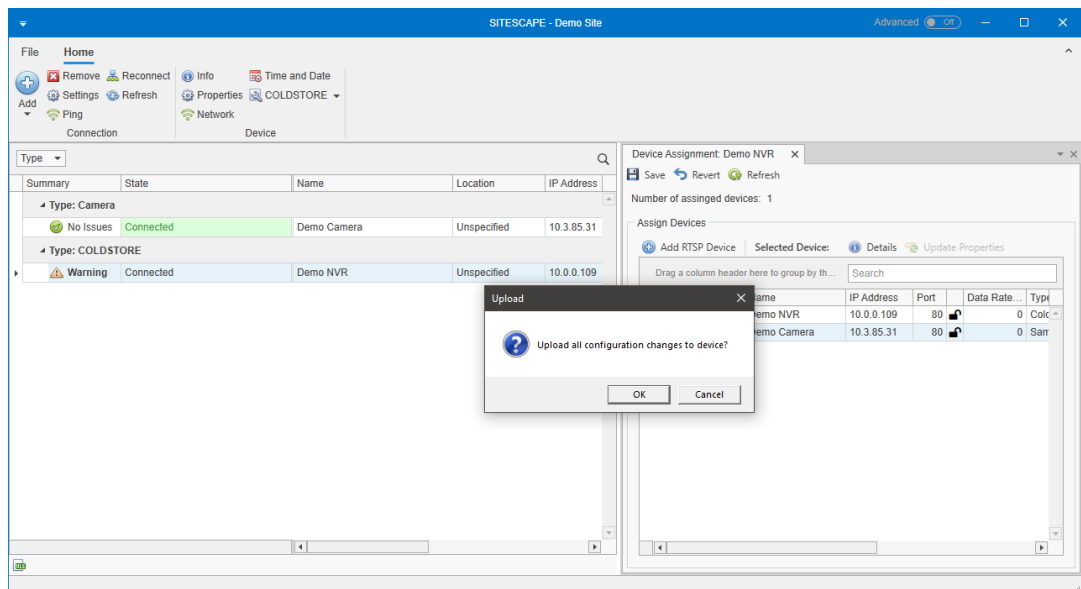
The Device Assignment panel will open on the right. This panel shows a list of all Devices. Devices which are assigned to the chosen COLDSTORE will have a check in the checkbox next to the Device.



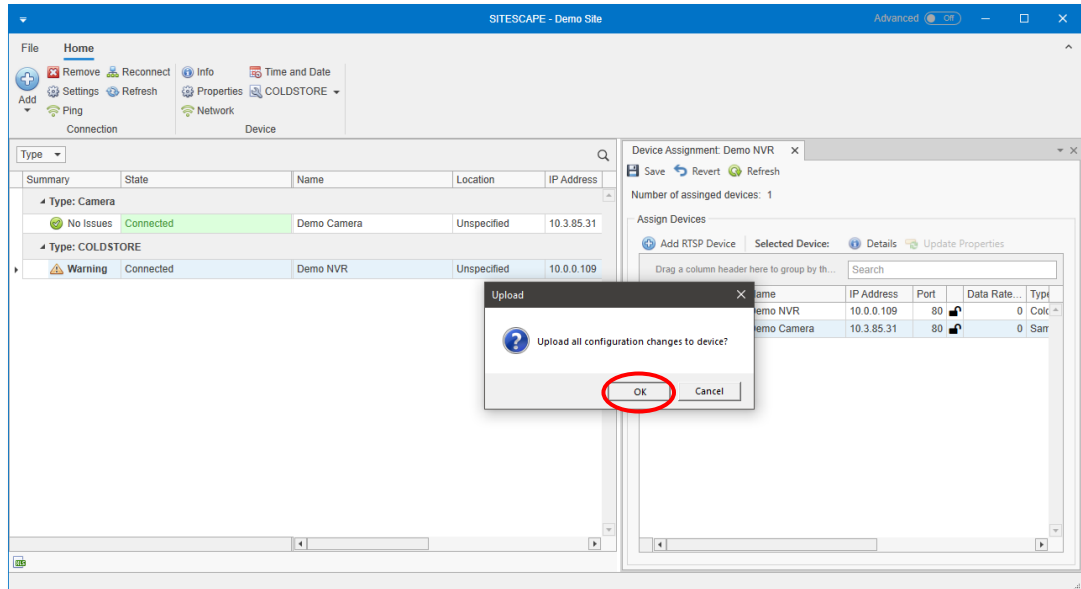
To assign an available Device to the chosen COLDSTORE, click on the empty checkbox next to the Device and the State column will change to 'Added'. After checking the checkbox for one or more Devices, click the Save button at the top of the panel to save the changes to the COLDSTORE.



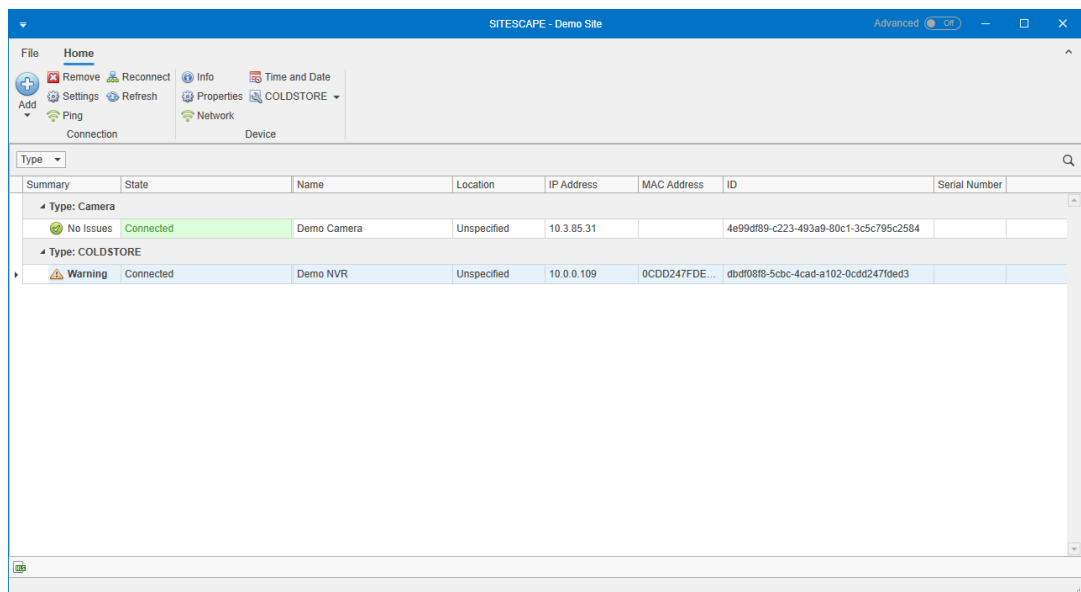
A message box will pop up to ask you to confirm that you want to save the changes to the Device.



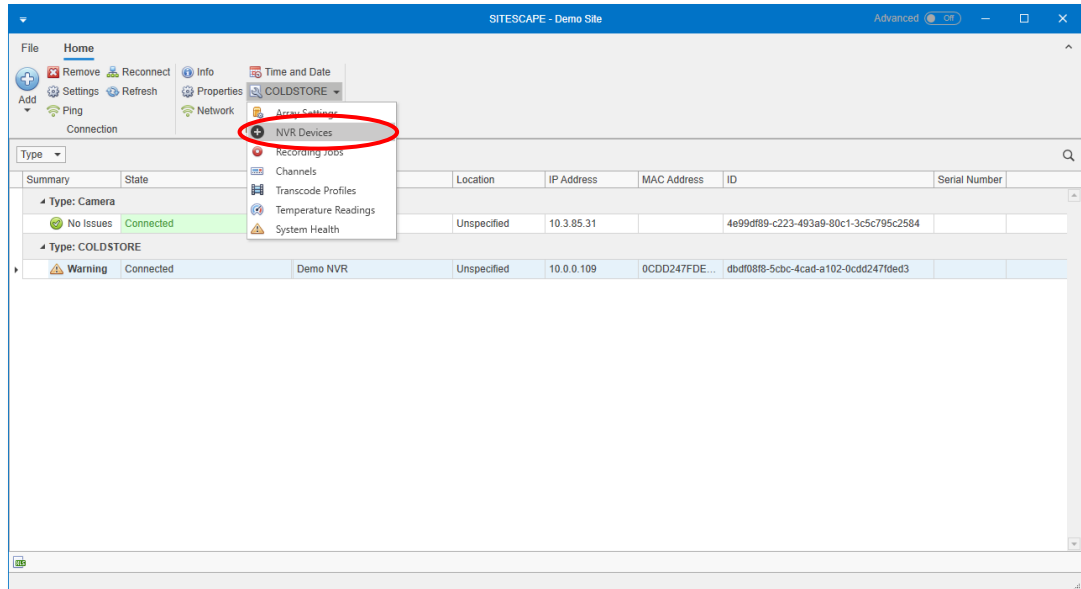
Click the OK button.



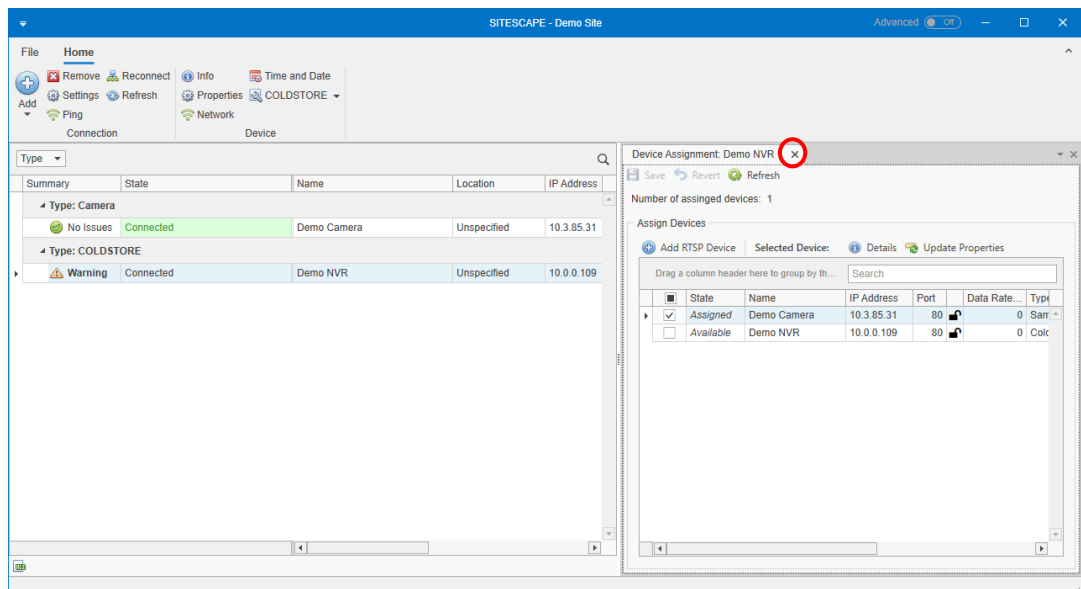
If the changes were made successfully, there will be no more messages and the panel will close.



If you want to verify that the Device is assigned, open the Device Assignment panel again.

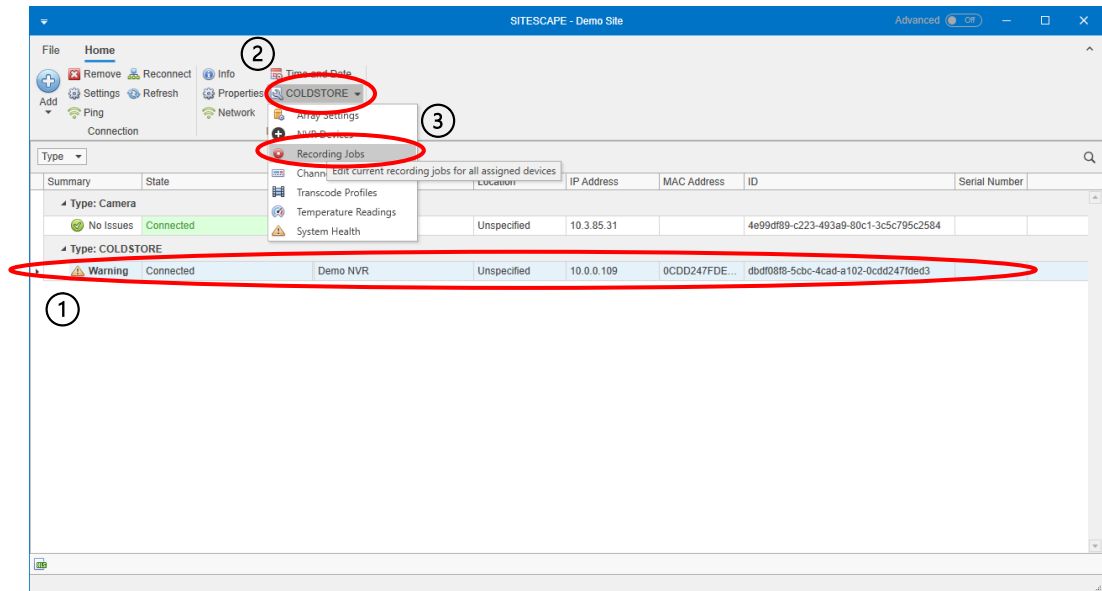


The Device which you assigned will have a check in the checkbox next to the Device and the State column will show 'Assigned'. You can close the panel by clicking the X in the tab at the top of the panel.

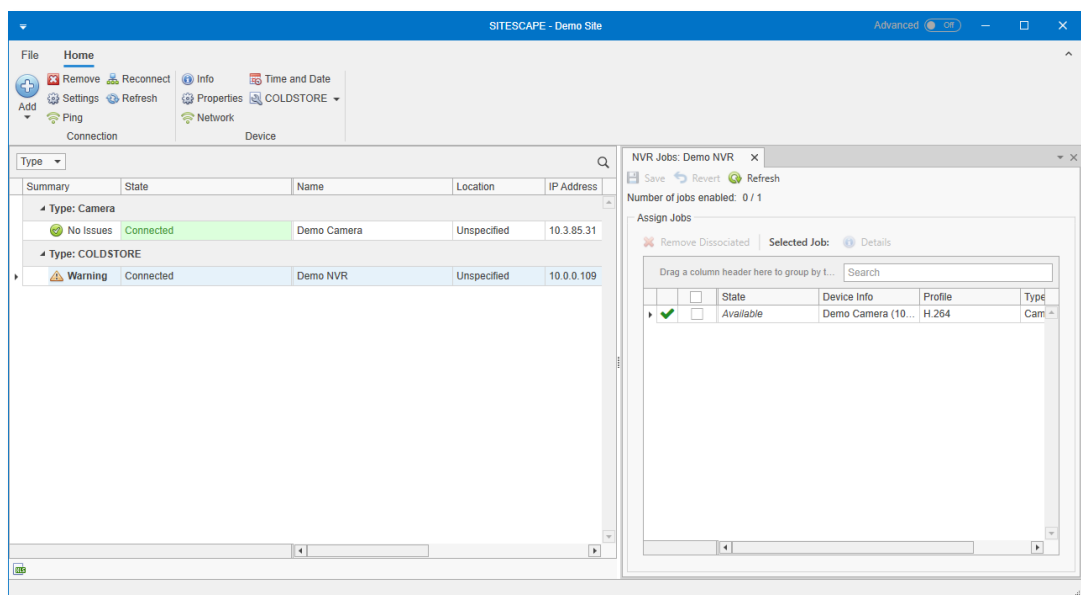


5 Enable a Recording Job

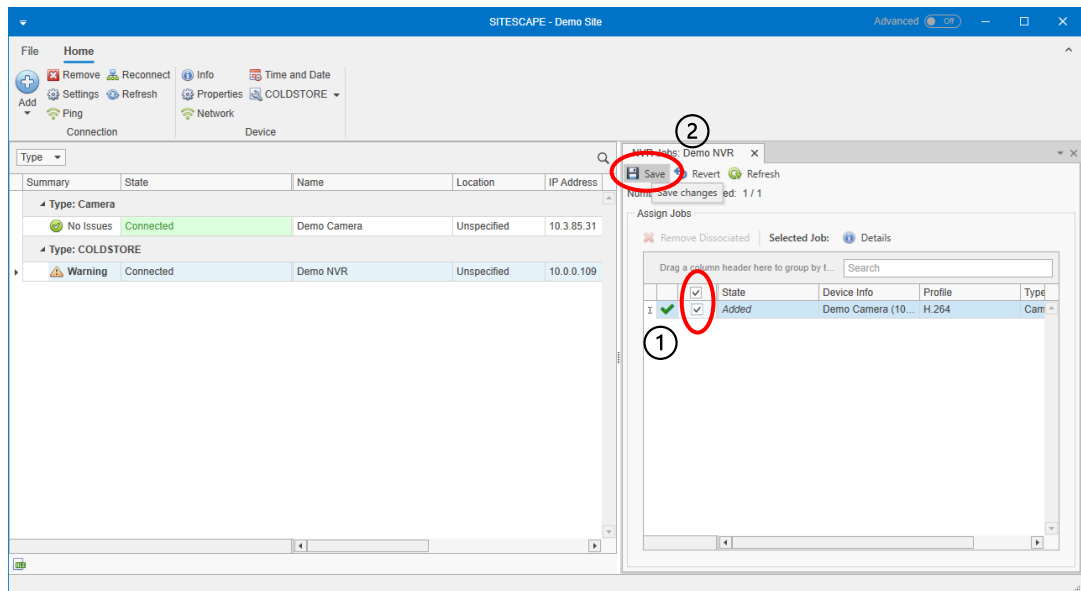
To enable a Recording Job on a COLDSTORE, select the COLDSTORE in the Device list and click on the COLDSTORE button in the Device section of the menu. From the drop-down, choose Recording Jobs.



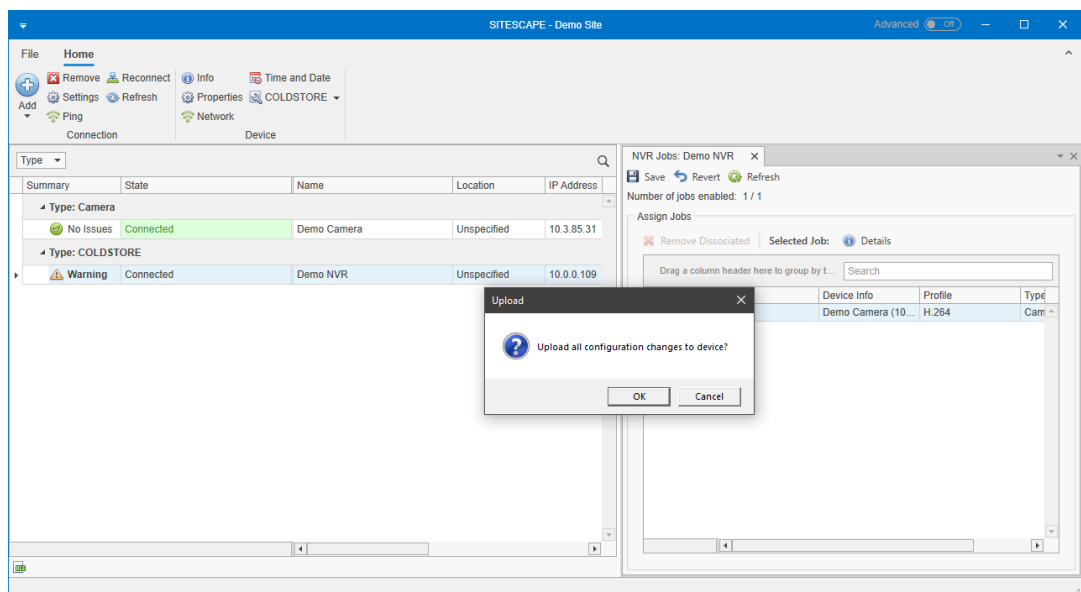
The NVR Jobs panel will open on the right. This panel shows a list of all Stream Profiles. Profiles which are recording to the chosen COLDSTORE will have a check in the checkbox next to the Profile.



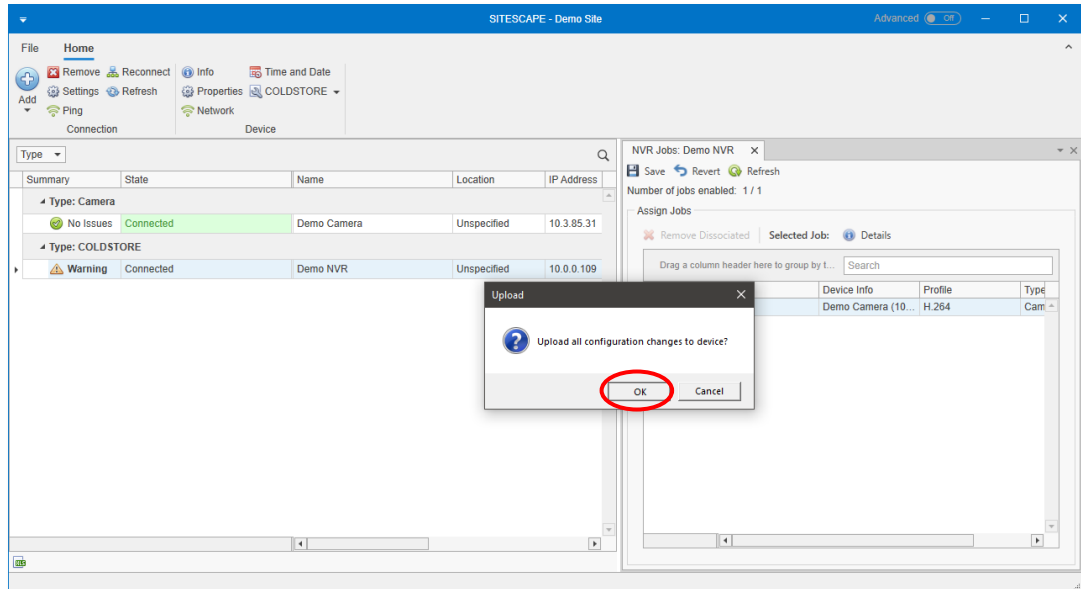
To enable a Recording Job for an available Profile on the chosen COLDSTORE, click on the empty checkbox next to the Profile and the State column will change to 'Added'. After checking the checkbox for one or more Profiles, click the Save button at the top of the panel to save the changes to the COLDSTORE.



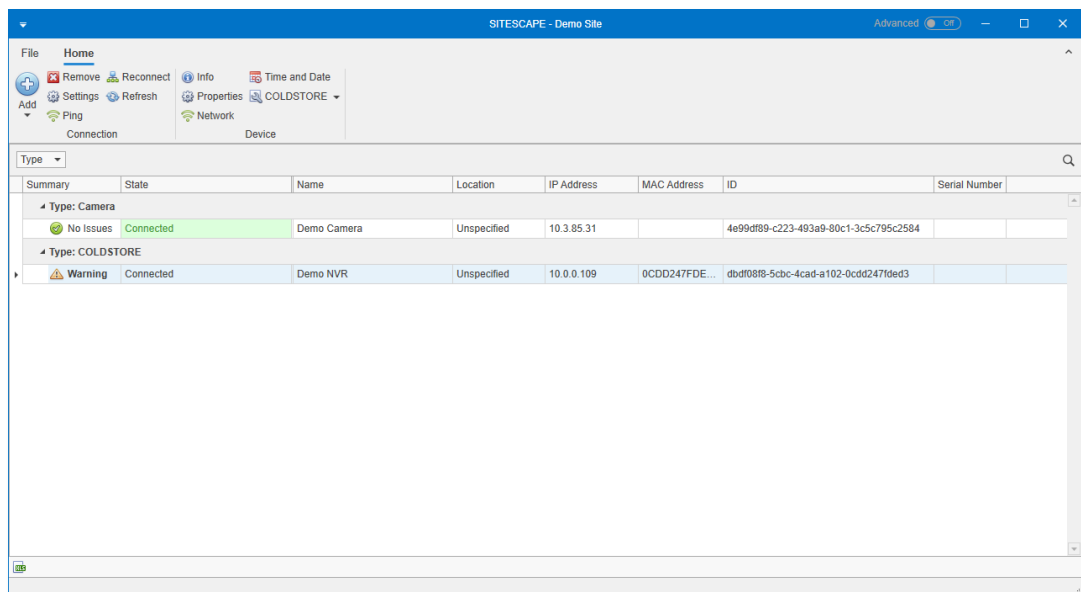
A message box will pop up to ask you to confirm that you want to save the changes to the Device.



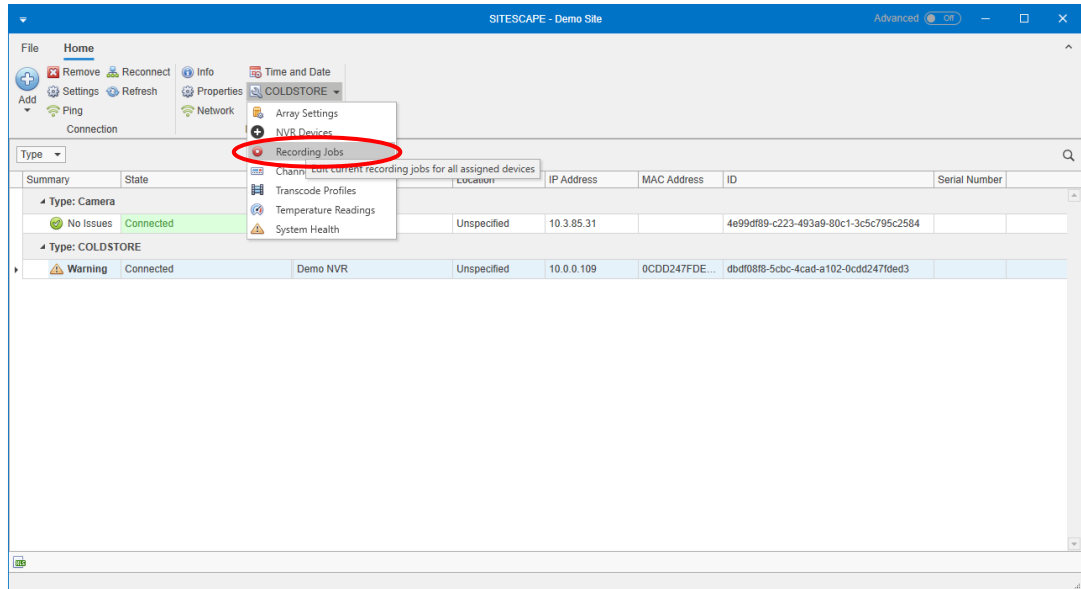
Click the OK button.



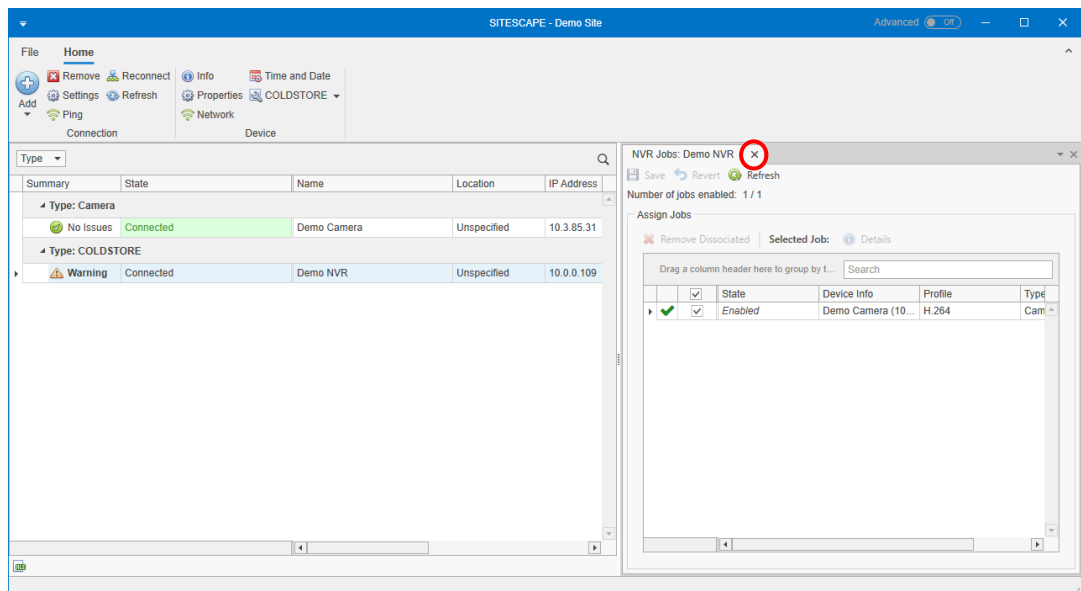
If the changes were made successfully, there will be no more messages and the panel will close.



If you want to verify that the Recording Job is enabled, open the NVR Jobs panel again.

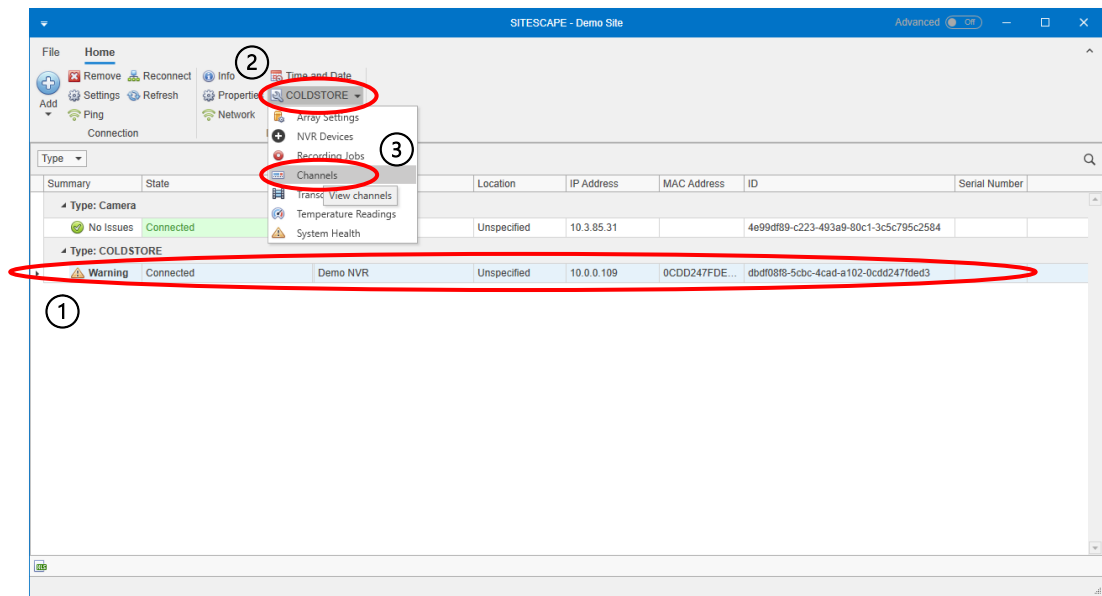


The Recording Jobs which you enabled will have a check in the checkbox next to the job and the State column will show 'Enabled'. You can close the panel by clicking the X in the tab at the top of the panel.

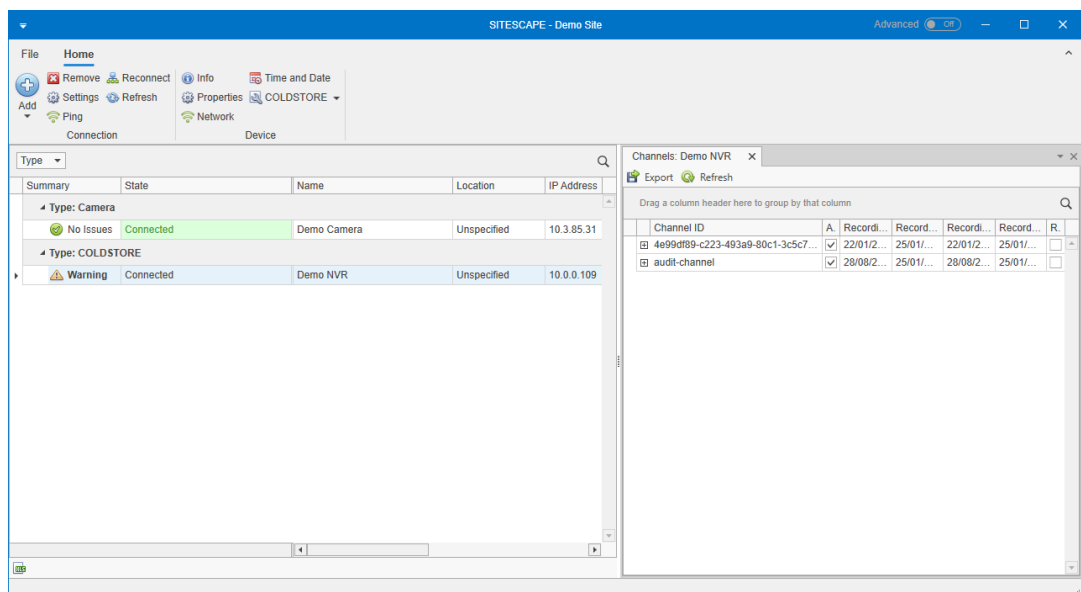


6 Verify that a Channel is recording

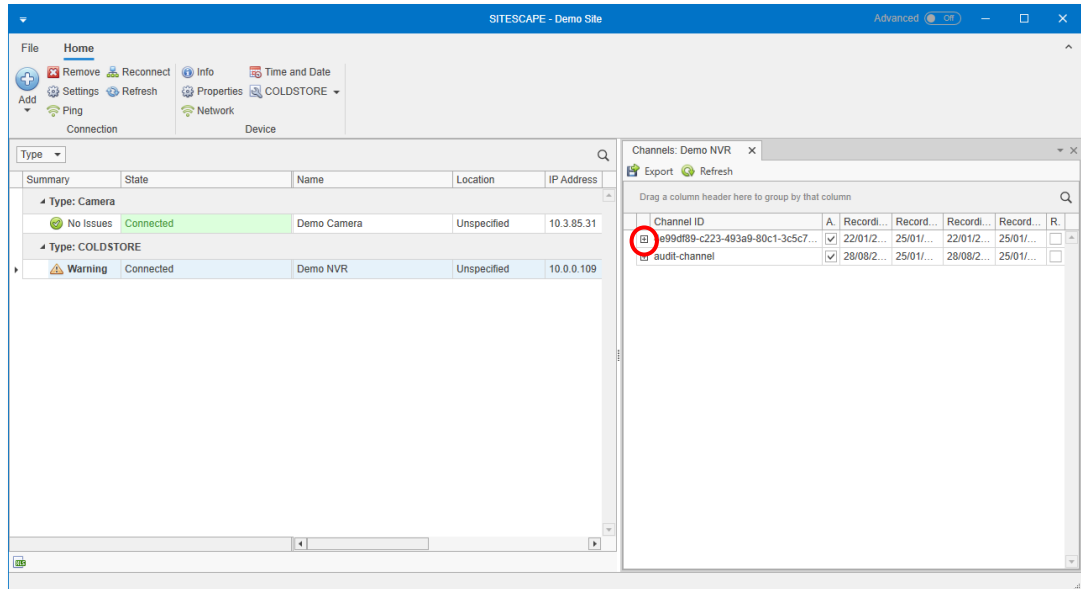
When a Recording Job is enabled, the COLDSTORE will record the chosen Profile to a Channel on the COLDSTORE. To verify that a Channel is recording, select the COLDSTORE in the Device list and click on the COLDSTORE button in the Device section of the menu. From the drop-down, choose Channels.



The Channels panel will open on the right. This panel shows a list of all Channels on the COLDSTORE. Channels which are currently recording will have a check in the checkbox next to the Channel.



To view more details about a Channel, click the plus icon next to the Channel.



Detailed information about the Channel will be shown, including the Device IP Address, Name and Profile. You can close the panel by clicking the X in the tab at the top of the panel.

