

# VIEWSPAN NEXUS®

VIDEO DISPLAY CONTROL SOFTWARE



VIEWSPAN NEXUS is a software platform for management, processing & display of video and graphical data on video walls

## VIEWSPAN NEXUS® is a high performance software platform for video wall displays

VIEWSPAN NEXUS® software is a highly optimised display processing system for enterprise-level delivery of decoded video streams, graphical information and data feeds for control rooms.

- | Secure distributed video controller software system
- | Eliminates dependency on a single central server
- | Enhanced system resilience for large video walls
- | Highly optimised video-decoding for maximum performance
- | Display IP cameras, AV, web pages, signage and applications
- | Integrated browser-based management of multiple systems
- | Stretch and position items anywhere on the video wall canvas
- | Supports AV capture, VMS integration, VNC, web & VIEWCAST

# VIEWSPAN NEXUS<sup>®</sup>

## software optimises the simultaneous decoding of many video streams

Distributed system, not dependent on a central server.



VIEWSPAN NEXUS supports many different video wall layouts

### Overview

VIEWSPAN NEXUS<sup>®</sup> is available as a fully featured software-only platform for the control and management of video and graphics displayed on everything from video walls to single screens, including distributed multi-monitor applications, operator workstations and spot monitors.

Available on a per full-HD-screen licence basis, NEXUS provides operators, shift supervisors and administrators with a simple to use, intuitive web browser management interface that allows users to connect to and control network-addressable display hardware devices with either mouse or touch interactivity.

### Applications

VIEWSPAN NEXUS video and graphics display applications include:

- | Command and Control Rooms
- | CCTV, Traffic and Security Monitoring
- | SOC (Security Operations Centres)
- | NOC (Network Operations Centres)
- | Industrial Process Control Centres
- | Board Rooms, Meeting Rooms and Auditoriums
- | Digital Signage for Retail

### Distributed System

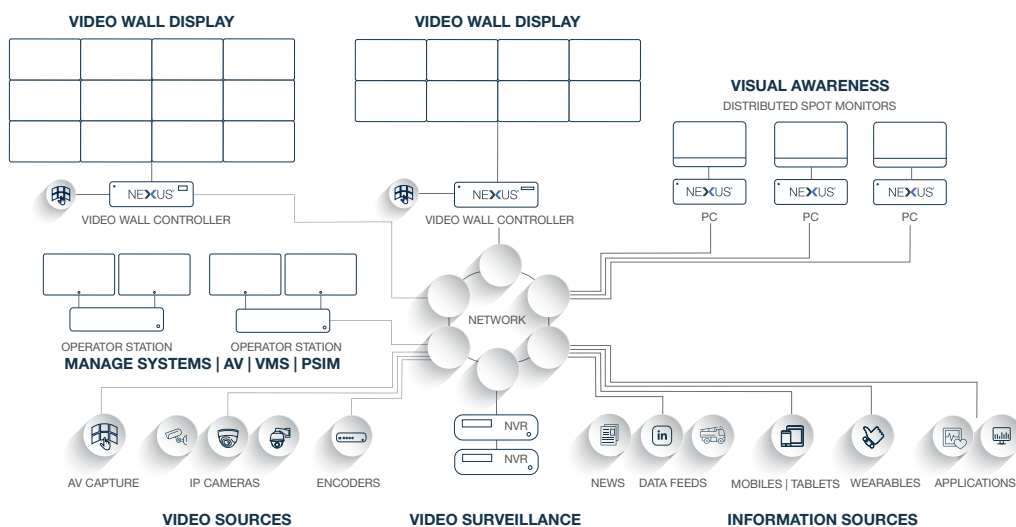
VIEWSPAN NEXUS architecture is a client-server system, where all video wall controllers are servers and therefore no centralised server is required. This eliminates a potential

single point of failure and reduces costs, as the centralised servers are expensive and require an additional failover server.

Each VIEWSPAN NEXUS device (server) works in sync with all other NEXUS devices on the same network, with the software able to operate on multiple systems, processors and graphics hardware, e.g. Intel, AMD, Nvidia and others, including legacy PCs and third-party video wall controllers.

This capability enables the user to operate a mix of existing PCs with NEXUS software and dedicated VIEWSPAN server appliances.

### VIEWSPAN NEXUS<sup>®</sup> APPLICATION DIAGRAM

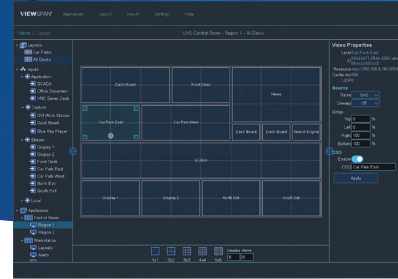


The diagram illustrates the power and flexibility of the VIEWSPAN NEXUS<sup>®</sup> software, which requires no central server. NEXUS is shown here, running on separate 12-output and 8-output video wall controller hardware devices, with three other instances on standard PCs, each driving a distributed Spot Monitor display.

VIEWSPAN NEXUS handles both direct AV capture (of Audio-Visual outputs) and IP network sources. IP network sources may include recorded video playback, encoded AV, live IP cameras, news and data feeds, web pages, smart devices or IP-encoded graphics outputs from applications running on other computer systems, including VIEWCAST screen capture streams.



# Fisheye lens dewarping can be performed on the GPU for optimum performance



Multiple display monitor layouts can be defined, saved and selected under operator control or triggered by alarms.

VIEWSPAN NEXUS supports AV capture and encoding systems, web page displays and Veracity's VIEWCAST screen capture streaming utility.

### System Management

Configuration, control and management of the system is done on a web browser via the Application Web Portal (AWP), which means that the client can be any PC, Mac, tablet or smartphone.

All NEXUS appliances are managed through a single web interface for ease of navigation and control.

### Optimised Performance

VIEWSPAN NEXUS is built upon an accelerated multimedia SDK, which utilises all available hardware acceleration from the following vendors: Intel - MFX Interface, AMD - AMF Interface and NVIDIA - NVDEC/NVENC Interfaces.

VIEWSPAN NEXUS provides system-level, high performance memory and bandwidth gains over traditional methods. It will automatically switch the additional load to CPU codecs when hardware acceleration methods are saturated or indeed unsupported. Therefore the maximum possible performance can be extracted from each server appliance.

### Sources

Video walls and auxiliary screens can flexibly display a very wide range of sources through the VIEWSPAN NEXUS system. These sources include IP cameras, recorded video, web pages, direct AV capture, encoded AV, computer applications running on

separate systems, scrolling text, date and time etc. For a complete list see Software Features on the back page.

### VIEWSPAN Integration

All dedicated VIEWSPAN video wall controller appliances include the same NEXUS software.

It supports multiple third-party video management system integration, giving the user a unified software platform for viewing, control and collaboration. VIEWSPAN systems are also fully supported by Veracity's PSIM software solutions for centralised management of multiple security systems including existing legacy installations.

## SOFTWARE | INTEGRATIONS

## VIEWSPAN NEXUS®

### EXTERNAL CONTROLS - API

VIEWSPAN NEXUS API  
 HTTP Alarm Trigger Interface  
 Extensive SDK APIs - HTTP(S), TCP, C# and C++  
 Alarm Script Management

### BENEFIT / EXPLANATORY DETAIL

The API allows third-party applications to control the VIEWSPAN system  
 Alarms may be communicated to NEXUS over HTTP for simple integration  
 Multiple options are available for direct integration to VIEWSPAN NEXUS  
 Simple to complex scripts supported for display output actions on alarm triggers

### VMS INTEGRATIONS

The following VMS systems are directly supported within VIEWSPAN NEXUS

Milestone Systems (XProtect)	Network Optix (Nx Witness)
Axis (Axis Camera Station)	Hanwha Vision (Wisenet Wave)
Genetec (Security Center)	Digital Watchdog (DW Spectrum)
Digifort (Digifort)	Wavestore (WaveView)

### PSIM INTEGRATIONS

The following PSIM systems are directly supported within VIEWSPAN NEXUS

VIEWSCAPE Core (Veracity Solutions)
VIEWSCAPE (Veracity Systems)

SOFTWARE FEATURES | **BENEFITS**

VIEWSPAN NEXUS®

<p><b>USER CONTROLS</b></p> <ul style="list-style-type: none"> <li>Web Browser Interface</li> <li>Touch Control Interface</li> <li>Drag-and-Drop-Interface</li> <li>Unlimited Simultaneous Operator Connections</li> <li>Multi-Region Management from a Single Controller</li> <li>Multiple Controller Management from Client Interface</li> <li>Region, Grid &amp; Desktop Alignment for Item(s) or Layout(s)</li> <li>Snap-to-Grid Source Re-Sizing</li> <li>Offline Layout Creation</li> <li>Layout Scheduler</li> <li>Source Sequencing (Playlist/Carousel)</li> <li>Quick Source Maximise - Region or Canvas</li> <li>Remote KVM (Keyboard/Video/Mouse)</li> </ul>	<p><b>BENEFIT / EXPLANATORY DETAIL</b></p> <ul style="list-style-type: none"> <li>Control from any platform (Windows, Mac, iOS, Android, Linux)</li> <li>Supports tablet and smartphone interfaces</li> <li>Simple, fast and intuitive source display control or configuration</li> <li>Ideal for control rooms and system operations centres</li> <li>Each video wall display controller can handle multiple display regions</li> <li>A single client can manage multiple display controllers as one integrated system</li> <li>Sources and layouts can be automatically aligned to grids and regions</li> <li>Sources can automatically re-size and snap-to-grid</li> <li>Layouts can be configured and defined offline and called up during live operation</li> <li>Layouts can be displayed according to a pre-defined time schedule</li> <li>Individual or multiple sources can be sequenced within grid slots</li> <li>Expansion of a source to fill a Region or full Canvas temporarily</li> <li>Connect to NEXUS server appliance for access within the browser interface</li> </ul>
<p><b>SOURCE CONTROL OPTIONS</b></p> <ul style="list-style-type: none"> <li>On-Screen Text Display</li> <li>Source Cropping</li> <li>Fisheye Video Lens Correction</li> <li>Aspect Ratio Control</li> <li>Coloured Borders (Static or Flashing)</li> <li>Audio Enable/Disable</li> <li>Ability to Rename a Source</li> <li>Folder System for Sources</li> </ul>	<ul style="list-style-type: none"> <li>Enables labelling of sources and text overlay on video and graphics</li> <li>Video and graphics sources may be cropped to display only part of the source</li> <li>Allows real-time de-warping of fisheye lens cameras, including digital PTZ</li> <li>Image aspect ratios may be set to original ratio or may be scaled to fit</li> <li>Highlighted borders on any display slot or grid item to indicate status (e.g. alarm)</li> <li>Audio from capture sources may be switched on or off</li> <li>All sources may be renamed with more user-friendly or informative labels</li> <li>Sources may be grouped in folders (akin to camera-grouping in VMS systems)</li> </ul>
<p><b>CONTENT SOURCES</b></p> <ul style="list-style-type: none"> <li>Images</li> <li>Videos</li> <li>IP Video Network Streams</li> <li>ONVIF Profile S</li> <li>Video and Audio Capture Sources</li> <li>Microsoft Office Applications:</li> <li>Third-party Applications</li> <li>VNC Application View</li> <li>VIEWCAST Screen Encoding Software</li> <li>Integrated Web Page Viewer</li> <li>Digital Clock Display</li> </ul>	<ul style="list-style-type: none"> <li>Static photos or graphic images</li> <li>All types of video sources (all formats supported)</li> <li>All IP video formats are supported with GPU acceleration and CPU rollover</li> <li>Profile S video streams supported with auto-discovery</li> <li>Via encoders, PCIe capture cards or USB capture devices (for HDMI, DP etc.)</li> <li>Any MS Office application window may be displayed as a channel source</li> <li>Any third-party application supporting DirectX 9, 10, 11, 12 and OpenGL</li> <li>Built-in VNC integration allows display of any VNC application or desktop source</li> <li>Operator desktops or applications can be mirrored onto the video wall</li> <li>Support direct display of web pages</li> <li>Time &amp; date display of UTC or local time zone in static or horizontally scrolling text</li> </ul>
<p><b>ADMIN &amp; CONFIGURATION</b></p> <ul style="list-style-type: none"> <li>Auto-Appliance Discovery</li> <li>Multi-Appliance Network Sync</li> <li>User Rights Management (URM)</li> <li>Remote Web Portal Login</li> <li>Force-Output Display Mode</li> </ul>	<ul style="list-style-type: none"> <li>All VIEWSPAN NEXUS appliances on network are discovered &amp; listed automatically</li> <li>All NEXUS devices automatically sync layouts and input sources with each other</li> <li>Proprietary URM database for secure user management and access</li> <li>Browser-based login and portal for configuration and management</li> <li>Enables correct output to correct display on reboot or monitor disconnection</li> </ul>
<ul style="list-style-type: none"> <li>VSPAN-NEX-KEY1 VIEWSPAN NEXUS 1</li> <li>VSPAN-NEX-KEY2 VIEWSPAN NEXUS 2</li> <li>VSPAN-NEX-KEY3 VIEWSPAN NEXUS 3</li> <li>VSPAN-NEX-KEY4 VIEWSPAN NEXUS 4</li> <li>VSPAN-NEX-KEY5 VIEWSPAN NEXUS 5</li> <li>VSPAN-NEX-KEY6 VIEWSPAN NEXUS 6</li> <li>VSPAN-NEX-KEY7 VIEWSPAN NEXUS 7</li> <li>VSPAN-NEX-KEY8 VIEWSPAN NEXUS 8</li> <li>VSPAN-NEX-KEY9+ VIEWSPAN NEXUS 9</li> </ul>	<ul style="list-style-type: none"> <li>NEXUS Software. Full HD output server licence key for 1 channel</li> <li>NEXUS Software. Full HD output server licence key for 2 channels</li> <li>NEXUS Software. Full HD output server licence key for 3 channels</li> <li>NEXUS Software. Full HD output server licence key for 4 channels</li> <li>NEXUS Software. Full HD output server licence key for 5 channels</li> <li>NEXUS Software. Full HD output server licence key for 6 channels</li> <li>NEXUS Software. Full HD output server licence key for 7 channels</li> <li>NEXUS Software. Full HD output server licence key for 8 channels</li> <li>NEXUS Software. Full HD output server licence key for 9 or more channels</li> </ul>



veracity

Veracity HQ  
 Prestwick International Aerospace Park  
 4 Dow Road  
 Prestwick  
 UK  
 KA9 2TU  
 Tel +44 (0) 1292 264967  
 www.veracityglobal.com  
 sales@veracityglobal.com

See [www.veracityglobal.com](http://www.veracityglobal.com) website for country and region specific contacts.

© Veracity UK Ltd 2023. All rights reserved. DV1.3EN  
 Under no circumstances should this document be reproduced, distributed or changed, partially or wholly, without written, formal authorisation from Veracity UK Ltd.  
 VIEWSPAN NEXUS® is a registered trademark of Veracity UK Ltd.