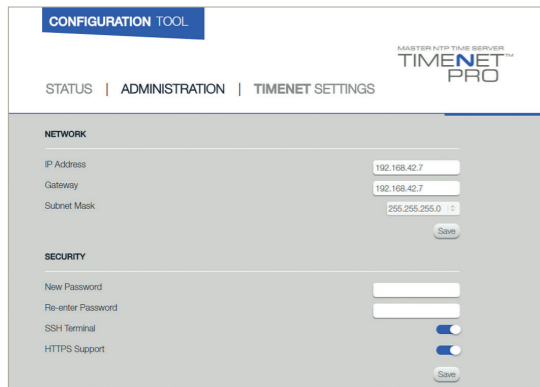


[SET UP | 3]

To change the IP address setting for your application:

1. Click the Administration tab and enter the IP Address, Subnet Mask and Gateway.
2. Click on Save to write the settings to TIMENET Pro. Enter the username and password when prompted.



3. Be sure to change the PC to the new IP domain before re-checking TIMENET Pro operation.
4. TIMENET Pro is now configured and ready to be used as an NTP server.

NOTE | When first powered up TIMENET Pro will display Initialising TIMENET Server Status on The Status tab. This will change to running typically within 30 minutes after which clients can synchronise their time against it.

[TROUBLESHOOTING]

Both LEDs are off: Check power source is available and functional.

Internet browser cannot connect to TIMENET Pro:
Verify IP address of PC is on the same domain as TIMENET Pro.

TIMENET Pro does not get a GPS lock:
Check the status page of TIMENET Pro.

- | If the Satellites column shows several entries, then wait a few minutes and check again.
- | If the Satellites column shows very few entries / low values then check that the Antenna is mounted in a suitable position with a clear view of the sky.

[FACTORY DEFAULT]

To reset TIMENET Pro to its default settings, either:

1. Click on the Administration Tab and select Restore Factory Settings or :
2. Use a paper clip to press the reset button for 3 seconds (see connections diagram) and TIMENET Pro will re-boot with the default settings.

FURTHER INFORMATION | Product Code **VTN-TN-PRO**

For the latest version of the **EC Declaration of Conformity** please go to http://veracitydownloads.com/Home/Perma?code=TIMENET_PRO_DoC

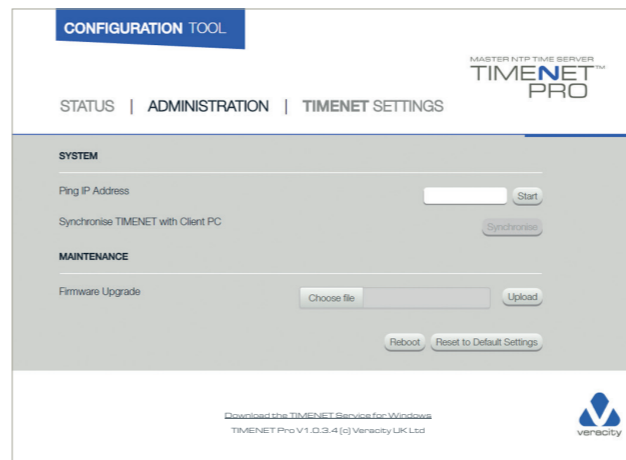
For the latest product information and application notes please visit our website: www.veracityglobal.com

[NTP CLIENT SOFTWARE]

To synchronize date and time under Windows 7, 8 and 10:

1. Click the TIMENET Pro Service for Windows download link and save the zip file to your computer. Unzip the file.
2. Follow the instructions in the TIMENET Pro Service for Windows Quick Start Guide to install the service and system tray application.

Here is the download link should you require it:
<http://veracitydownloads.com/Home/Perma?code=timenet-client-current>



For other operating systems refer to NTP client configuration in the operating systems documentation.

Veracity's Authorised Representative in the EU (as required by EU law for CE marked goods) is: Comply Express Unipessoal Limitada, StartUp Madeira, EV141, Campus da Penteada, 9020 105 Funchal, Portugal

© Veracity UK Ltd 2023 DV2.6 EN
TIMENET Pro® is a registered trademark
of Veracity UK Ltd



VTN-TN-PRO

[QUICKSTART GUIDE]

GPS MASTER NTP TIME SERVER WITH POE
TIMENET®
PRO



[INSTALLATION | 1]

TIMENET Pro should only be installed:

- indoors, or :
- inside an appropriately ventilated, IP-rated enclosure

TIMENET Pro should be safely located, either :

- on a shelf, or :
- mounted to a wall

NOTE | *TIMENET Pro should not be supported only by the attached cables.*

The TIMENET Pro supplies 3V of antenna power. An antenna is shipped with the unit.

The GPS antenna must be positioned in a location that has a clear view of the sky. It can be mounted, either :

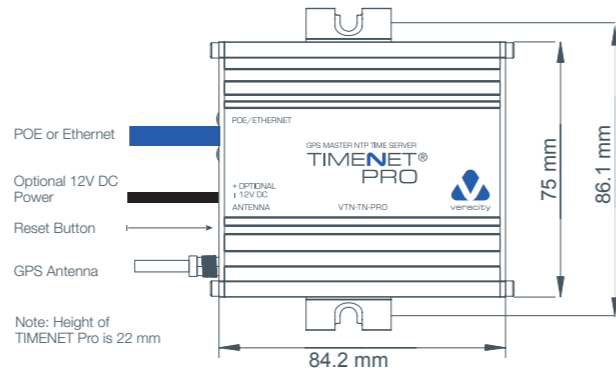
- on a window, using the adhesive pad supplied (first clean the glass, using the alcohol pad supplied) or :
- on a metal surface, using the magnetic antenna pod

Should you require additional length on the antenna cable, please use TIMENET Antenna 10m Extender, partcode : **VTN - EXTEND**

TIMENET Pro should only be powered by :

- a suitable POE network, or :
- a Class II isolated 12V DC power supply :

[INSTALLATION | 2]



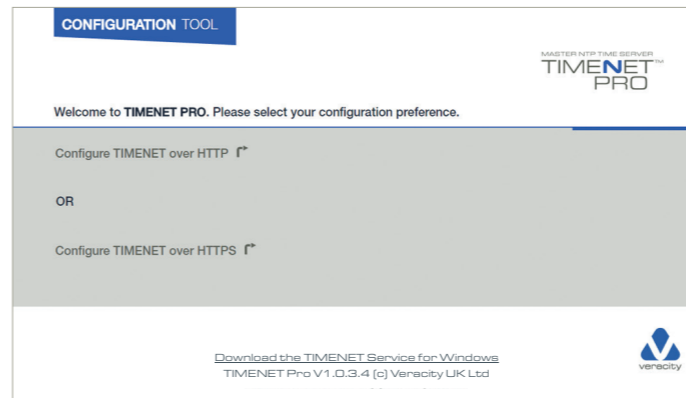
1. Connect the network cable. TIMENET Pro consumes under 2W and provides a Class I POE signature.
2. If your network is NOT POE, then you must also connect the alternative 12V DC power.
3. The amber LED will illuminate solid on after 2 seconds. After a further 12 seconds the amber LED will start pulsing and the green LED will initially blink with short pulses changing to a long off pulse approximately 30 seconds after power has been applied. This indicates normal running with no GPS signal lock.
4. Connect the GPS antenna cable supplied with the unit and ensure that the cable connector is fully screwed on.
5. After a few minutes (assuming the GPS antenna has been properly mounted and connected) the green LED will switch to a long on pulse, indicating GPS signal lock.

NOTE | *Depending upon the position of the antenna with respect to the view of the sky, it may take longer to gain signal lock.*

[SET UP | 1]

1. Connect a PC to the same network as TIMENET Pro
The default IP address of TIMENET Pro is **192.168.42.7**
2. Configure the network settings of the PC to the same domain (e.g. 192.168.42.100).
3. Start an internet browser and navigate to **192.168.42.7**
This will connect the PC to TIMENET Pro.
4. Select whether you wish to continue configuration using HTTP or the secure HTTPS.

NOTE | *If selecting HTTPS your browser will display a warning about the site being unsafe.*

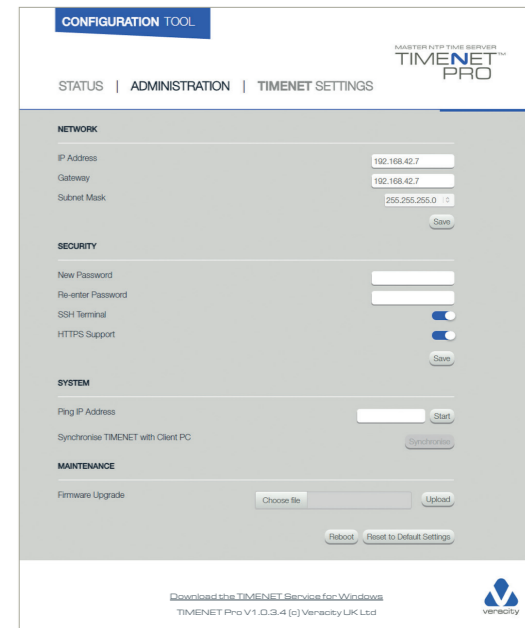


[SET UP | 2]

To Change the Default Password:

1. Click on the Administration tab.
2. Type in the new password and click on Save.
Enter the username and password when prompted.
The default password is **admin**
The default username is **admin**

NOTE | *Any future Configuration changes will require the new password to be used.*



Set Up [3] is overleaf.