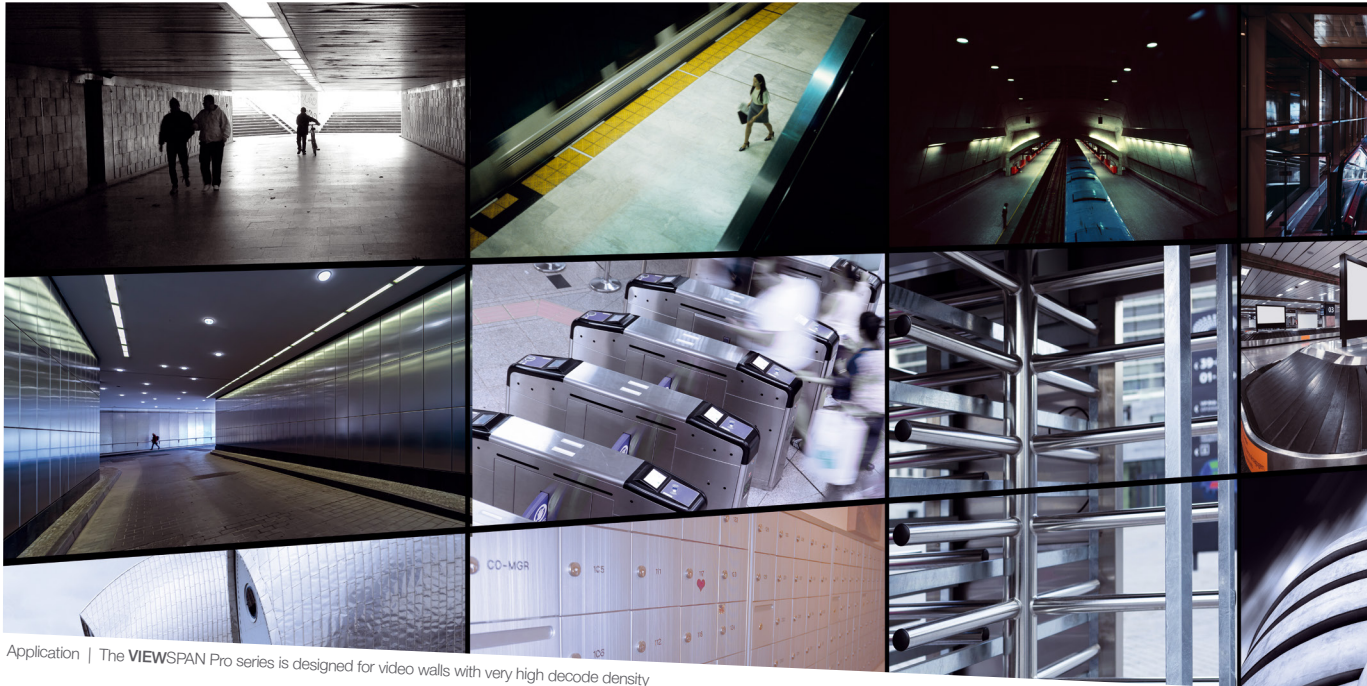


MAXIMUM PERFORMANCE DISPLAY CONTROLLER

**VIEWSPAN PRO6®**



Application | The VIEWSPAN Pro series is designed for video walls with very high decode density

Veracity's highest performance video wall controller for IP video decode and display

All VIEWSPAN® models incorporate highly optimised VIEWSPAN NEXUS video processing software, delivering a full feature set for enterprise-level solutions

- | Six display outputs for Full HD or UHD monitors
- | Decoding & display of 16 Full HD streams per screen output
- | Display of IP cameras, AV sources, web pages & signage
- | Integrated browser management of multiple systems
- | Stretch & position items anywhere on the video wall canvas
- | Compatible with AV capture, VIEWCAST, VNC & web
- | Accelerated fisheye camera lens dewarping



# VIEWSPAN Pro series

are the top of the range video display controllers for the highest decode density and screen resolutions

Multiple VIEWSPAN® devices can be integrated to drive large numbers of displays



Configuration and Control via web browser interface

## Display Controllers

VIEWSPAN® video wall controllers are designed especially for video surveillance, audio-visual and digital signage applications. They are built on professional grade hardware, specifically selected and tested to meet the performance and reliability requirements of high security control rooms. VIEWSPAN Pro 6 is a 4U rackmounted unit, with six screen outputs and a 10Gb network interface. Each output can drive Full HD or UHD monitors at full resolution.

The Pro range of controllers includes dual hot-swap power supplies and rear-mounted, mirrored, hot-swap OS and application SSDs.

## Optimised Software

The VIEWSPAN system incorporates VIEWSPAN NEXUS highly optimised video processing software. Combined with the extremely powerful dedicated GPU and CPU hardware, it produces incredible performance with super smooth video, decoding and displaying up to 16 Full HD 30 FPS channels per screen output.

VIEWSPAN includes GPU-accelerated fisheye camera lens dewarping capability, for corrected display of live or recorded video.

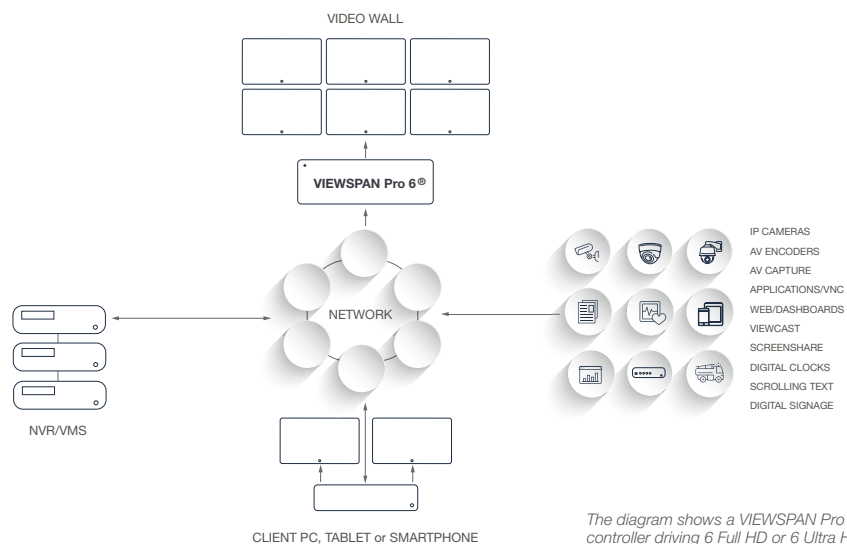
See the table on page three for full decode performance at various stream resolutions.

## Setup & Configuration

A simple web browser interface is used to configure all VIEWSPAN systems, allowing network setup, display arrangement and VMS/NVR integration settings. VIEWSPAN can be directly integrated with the VMS or integrated security management system, or it can be used as an accelerator platform for the VMS display, controlling VIEWSPANs on a client through the browser interface.

Multiple VIEWSPAN units can be configured to control large video walls with many screens for large CCTV control rooms and security operations centres.

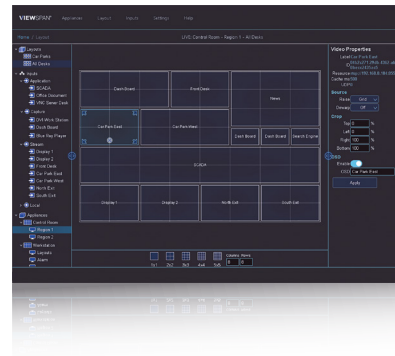
## VIEWSPAN Pro 6® APPLICATION DIAGRAM



The diagram shows a VIEWSPAN Pro 6 video wall controller driving 6 Full HD or 6 Ultra HD displays. Displayed video streams may come from any source, including the NVR, cameras or even the Client PC. Multiple streams can be displayed on each monitor (matrix view).

# Panoramic fisheye camera lens dewarping is performed on the GPU for optimum performance

VIEWSPAN incorporates support for popular VMS systems with full integration



Multiple display monitor layouts can be defined, saved and selected under operator control or triggered by alarms

### Video Stream Decoding

VIEWSPAN® devices can decode almost any video stream format, with the most common being H.264 and H.265 for surveillance applications.

A higher number of streams can be decoded and displayed simultaneously if the resolution and/or frame rate is lower. For live video display applications, it is preferable to maintain a high frame rate (25 or 30 FPS) for smooth video.

### Display Flexibility

VIEWSPAN Pro 6 models can smoothly drive a 4 x 4 matrix of 16 video streams (at Full HD input resolution) on each of its display outputs without

stutter or frame drop. Supported video formats may be cropped, scaled and displayed anywhere on the six-screen video wall canvas. A single stream may also be stretched across the full video wall if required.

Pro 6 models can drive six 4K/UHD displays. They can decode and display multiple 8-megapixel (4K/UHD) IP camera streams at full resolution and frame rate on these maximum resolution display outputs.

VIEWSPAN can also take advantage of lower resolution sub-streams to display more streams, such as 25 D1 streams per Full HD screen.

### VIEWSPAN® Range

Veracity provides a range of VIEWSPAN models to suit different requirements. The Pro range includes 6 and 9 screen models with the highest decode densities. The Plus range includes 6, 9 and 12 screen models. VIEWSPAN Solo is a compact, low cost option for a single Full HD or UHD screen, decoding up to 25 Full HD video streams. Solo is ideal for auxiliary and distributed displays. The VIEWSPAN AV range provides direct AV capture and display for audio-visual video wall applications. All models run VIEWSPAN NEXUS® software, are inter-compatible and are managed through a single browser interface.

## VIEWSPAN Performance Comparison Table

PERFORMANCE TABLE FOR FULL HD OUTPUTS		MAXIMUM NUMBER OF SIMULTANEOUS DECODE CHANNELS AT 30 FPS		
IP VIDEO INPUT (RESOLUTION)	IP VIDEO INPUT (REFERENCE)	VIEWSPAN Plus 6®	VIEWSPAN Pro 6®	VIEWSPAN Pro 9®
720 x 480 or 576	NTSC or PAL D1	96 ch	192 ch	192 ch
1280 x 720	720p HD	96 ch	144 ch	192 ch
1920 x 1080	1080p Full HD	54 ch	96 ch	144 ch
3840 x 2160	4K UHD	6 ch	24 ch	36 ch
Display Outputs, Type and Resolution		6 x miniDisplayPort Full HD or 4K/UHD	6 x DisplayPort Full HD or 4K/UHD	9 x DisplayPort Full HD or 4K/UHD

The table shows the number of video input channels which can be simultaneously decoded at a given input resolution. However, the displayed resolution of each individual channel will be dictated by the

display resolution, layout pattern and the number of screens available. For example, VIEWSPAN Pro 6 can decode 96 Full HD input channels when it is connected to 6 Full HD display

outputs, then the output streams will be scaled down to fit the screen area resolution defined for those channels.

TECHNICAL SPECIFICATION

VIEWSPAN Pro 6®

<b>POWER INPUT</b>	
Input Voltage	100V to 240V AC, 50/60Hz
Power Consumption	300W typical, 510W under full load
<b>SYSTEM</b>	
Hardware	4U Rackmount industrial PC server
Processors	CPU: Intel, GPU: Nvidia x 2
Operating System	Windows 10 LTSC, 64bit OS on mirrored (RAID 1) 2.5" SSD
Codec Support	GPU: H.264, H.265, MPEG-1, MPEG-2, VP8, VP9 CPU: ffmpeg codecs – see <a href="http://www.ffmpeg.org/general.html#Video-Codecs">www.ffmpeg.org/general.html#Video-Codecs</a>
<b>PERFORMANCE</b>	
Decode Channels (See table on page 3)	All at 30 FPS (higher channel counts available with lower frame rates) 192 at D1 resolution 144 at 720p resolution 96 at Full HD resolution 24 at 4K UHD resolution
Stretch Video	Yes, across up to six screens
Dewarp	Yes
<b>NETWORK</b>	
Ethernet	1 x Gb Ethernet 1 x 10Gb Ethernet
<b>CONNECTIONS</b>	
Power	2 x IEC 13
Ethernet	2 x RJ45
USB	3 x USB 3.2 Type A, 2 x USB 3.1 Type A, 2 x USB 3.2 Type C
Display	6 x DisplayPort
<b>PHYSICAL/ENVIRONMENTAL</b>	
Form Factor	4U Rackmount case, includes mounting rails
Case Dimensions	W 466mm x H 176mm x D 430mm [ 18.32" x 6.93" x 16.93" ]
Weight	13.0Kg [ 28.66lbs ] including the mounting rails
Operating Temperature	0°C to +40°C [ 32°F to +104°F ]
Storage Temperature	-40°C to +80°C [ -40°F to +176°F ]
Relative Humidity	85% non-condensing
Safety & Compliance	CE, FCC Class A, UKCA, ROHS and WEEE
<b>PRODUCT CODES</b>	
VSPAN-PRO-6-UK	VIEWSPAN Pro 6, video wall controller, 6 outputs, rails & UK power cable
VSPAN-PRO-6-EU	VIEWSPAN Pro 6, video wall controller, 6 outputs, rails & EU power cable
VSPAN-PRO-6-US	VIEWSPAN Pro 6, video wall controller, 6 outputs, rails & US power cable



Veracity HQ  
 Prestwick International Aerospace Park  
 4 Dow Road  
 Prestwick  
 UK  
 KA9 2TU  
 Tel +44 (0) 1292 264967  
[www.veracityglobal.com](http://www.veracityglobal.com)  
[sales@veracityglobal.com](mailto:sales@veracityglobal.com)

See [www.veracityglobal.com](http://www.veracityglobal.com) website for country and region specific contacts.

© Veracity UK Ltd 2023. All rights reserved. DV1.2EN  
 Under no circumstances should this document be reproduced, distributed or changed, partially or wholly, without written, formal authorisation from Veracity UK Ltd.  
 VIEWSPAN® is a registered trademark of Veracity UK Ltd.